

www.pvmhi.com



PLEASANT VALLEY MODULAR HOMES INC

Bridgeport 27'5" x 56'

Approx 1540 sq ft of Living Space

Model: RA2-EL-0506

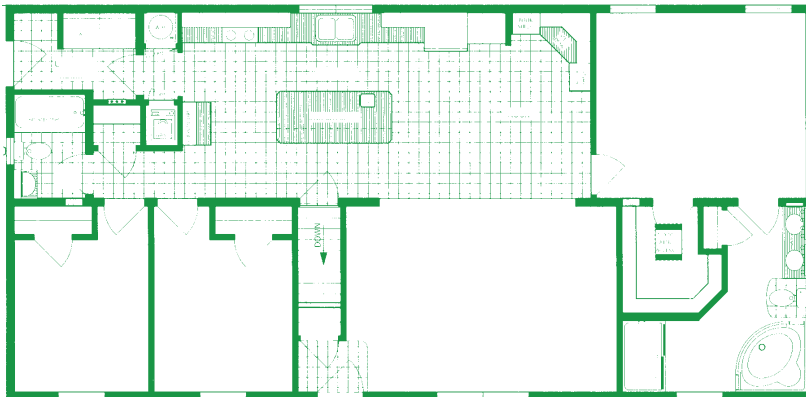


PLEASANT VALLEY MODULAR HOMES INC

Simply Stated Pleasant Valley Is The Finest Modular Home Built Today! Superior Construction Yields Superior Products! You Be The Judge - Compare Just These Few Most Sought After Standard Specifications With Any Competitor - Builder or Dealer.

Roof System Built To **100-Pound** Ground Snow Load at **16" O.C.** **90 MPH** + Exposed Wind Load Design. **7/16" OSB** Sheathing Wrap - ALL AROUND. **2x10** Solid Floor Joist 16" O.C. **2x6** Interior and Exterior Wall Construction **16" O.C.** Upgrade Raised panel Cabinetry. **Triple Coated** Spackle Drywall Finish T/O. Vapor Air Barrier Wrap. **Average Weight Of This House - A Whopping 55,000 lbs!** Remember Muscle Weighs More Than Fat!

Pleasant Valley Give You The Strongest Construction, The Finest Craftmanship And The Most Innovative Designs Available In A Modular Home. Find Pleasant Valley Homes Only At Riverview Homes, Inc.



PA CODE MODULAR

