

www.pvmhi.com



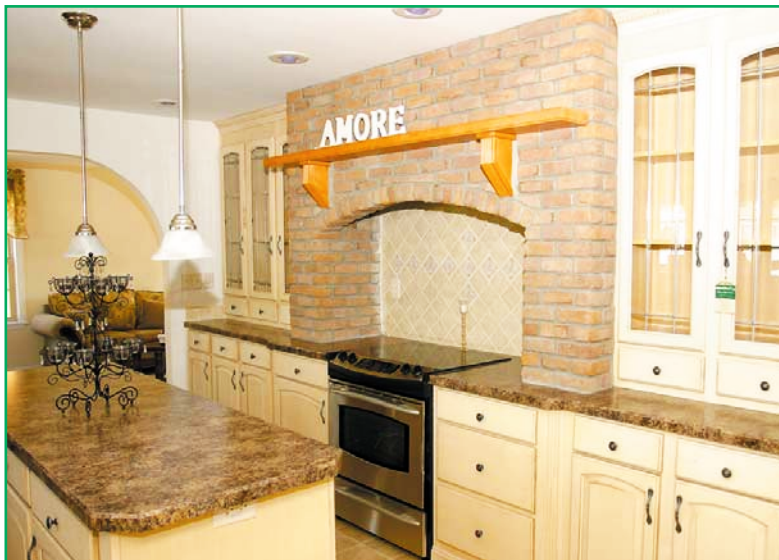
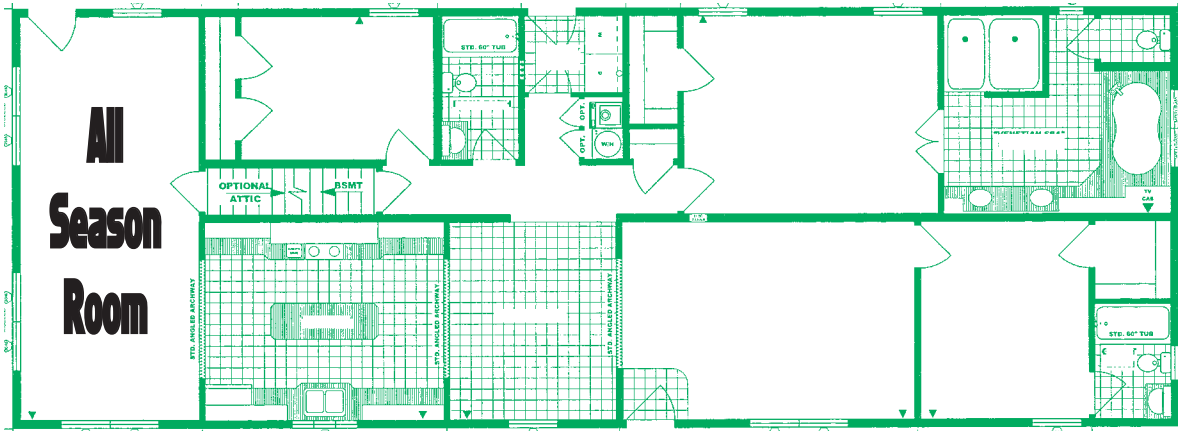
PLEASANT VALLEY MODULAR HOMES INC.

Hampton

Model: RA2EL0976

27'5" x 76'

Approx 2084 sq ft of Living Space



PA CODE MODULAR

STRENGTH

Every PLEASANT VALLEY Home Is Built To Superior Construction Standards

- 2"x 6" Exterior Walls-16" On-Center
- 16" On-Center Floor Framing & Roof Construction
- 7/16" OSB Sheathing Around Entire Home & On Marriage Walls
- Roof 120# Ground Snow Load

FAR BEYOND THE STANDARD