

ATLANTIC<sup>®</sup>  
HOMES



SINGLE-SECTION  
**ESSENTIALS COLLECTION**





# MADE FOR LIVING

## **A heritage of excellence.**

Atlantic Homes has been providing families with quality homes for generations. With a unique combination of state-of-the-art manufacturing and high-quality building materials, we provide the highest value in housing. We have earned our reputation by consistently delivering more than our customers might expect. More innovative quality features. More home styles. More flexible floor plan designs. More helpful customer service. And, most of all, more home for the money.

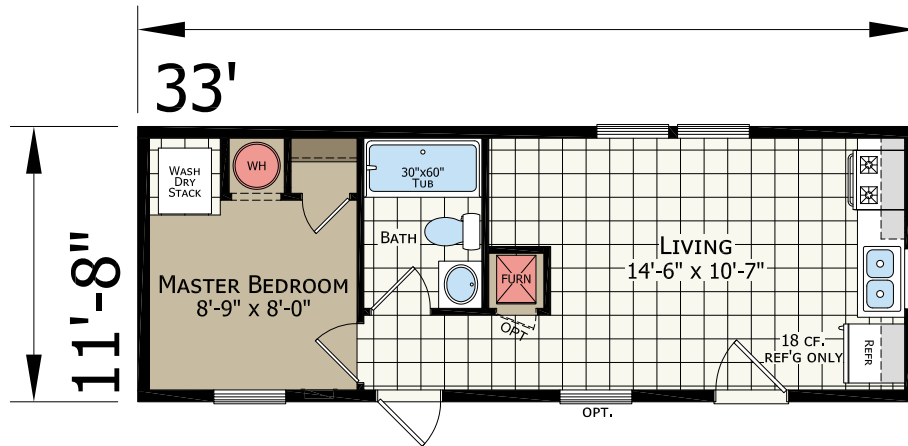
## **For you. For life.**

Beyond just building you a house, we're committed to providing you and your family with a home to make memories in that will last a lifetime. Somewhere you can feel secure. A place you can call your own. A home that fits your lifestyle and has your own personal touch. Whether you're an active young family constantly on the go or empty-nesters ready to simplify, just relax – we have a home that's right for you.

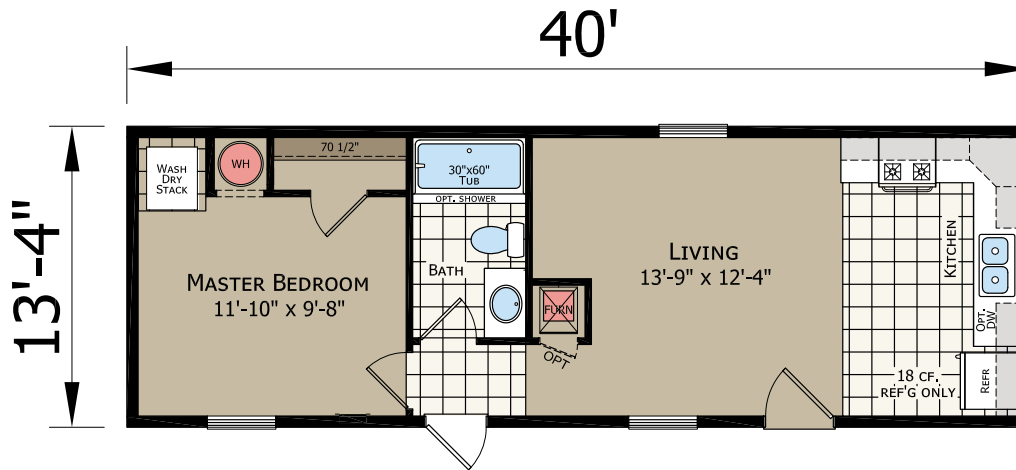
## **Lifestyle. Choice.**

Our vast selection of floor plans, color choices and options give you the freedom to express your personal style and fit your home around your life.

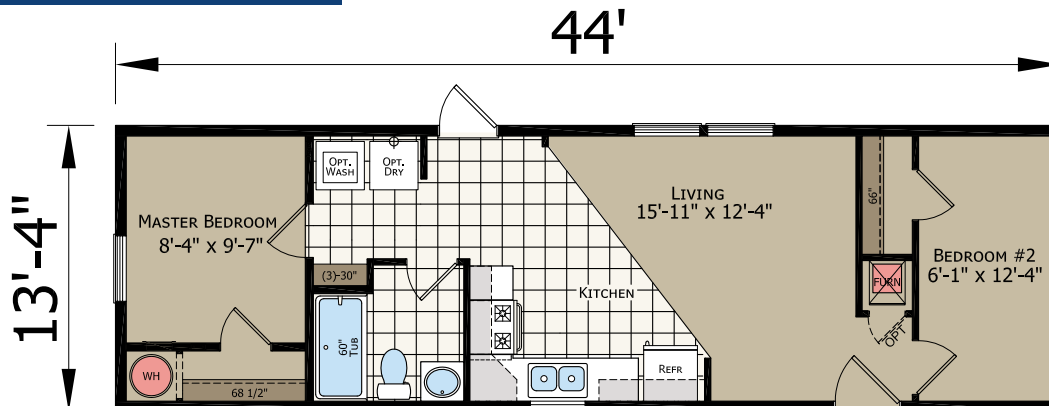
**T-24002** | 11'-8"x 33'  
1 bed-1 bath  
385 sq. ft.



**F-24002** | 13'-4 x 40'  
1 bed-1 bath  
533 sq. ft.

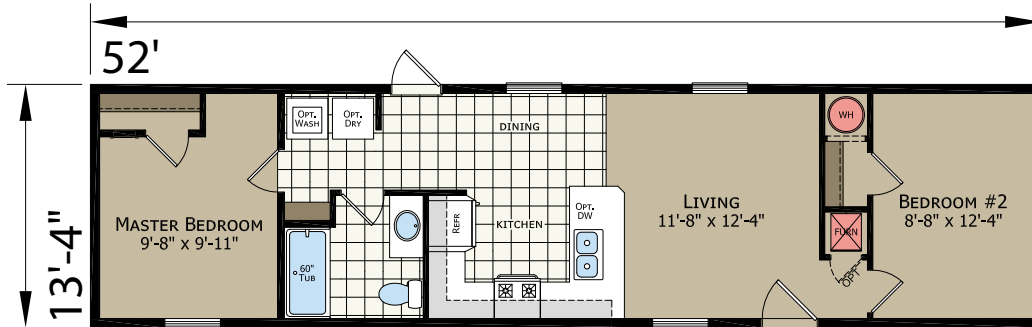


**F-24406** | 13'-4"x 44'  
2 bed-1 bath  
587 sq. ft.



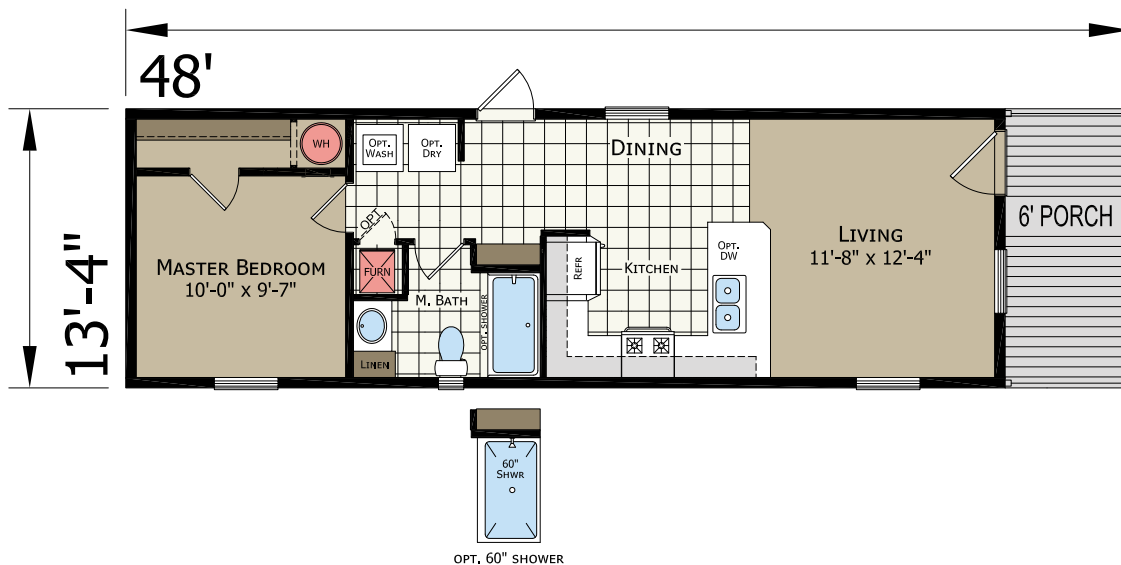
# F-25215

13'-4" x 52'  
2 bed-1 bath  
693 sq. ft.



# F-44831

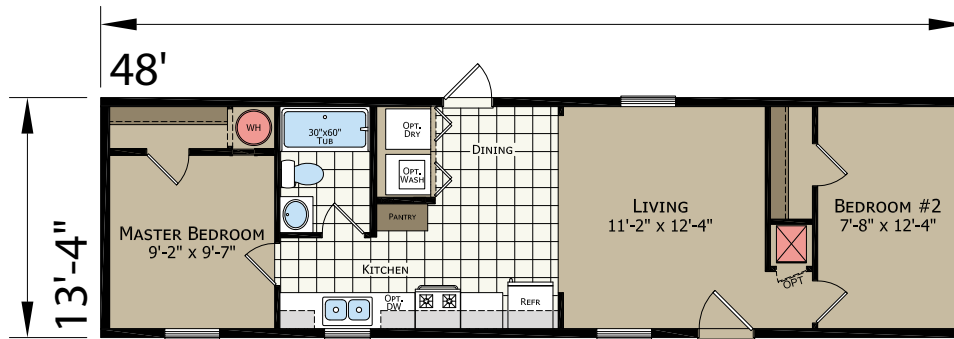
13'-4" x 48'  
1 bed-1 bath  
640 sq. ft.



# F-24805

13'-4" x 48'  
2 bed-1 bath  
640 sq. ft.

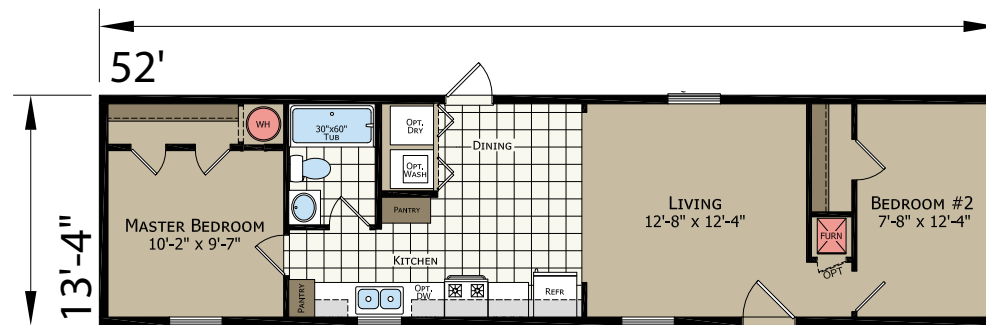
## 48'



# F-24805

13'-4" x 52'  
2 bed-1 bath  
693 sq. ft.

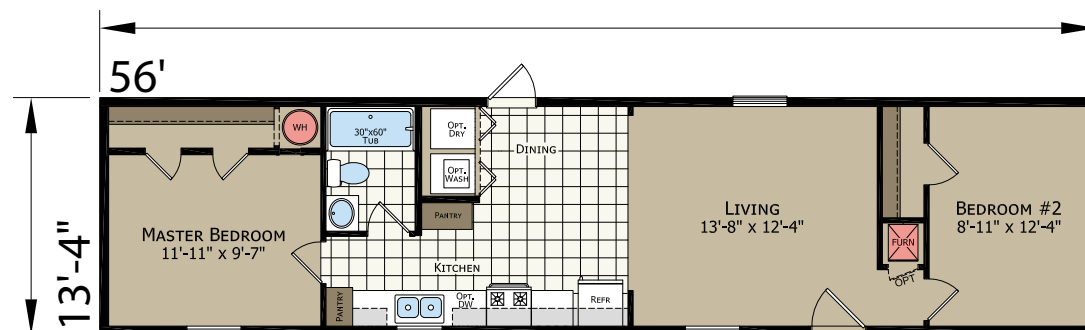
## 52' OPTION



# F-24805

13'-4" x 56'  
2 bed-1 bath  
747 sq. ft.

## 56' OPTION

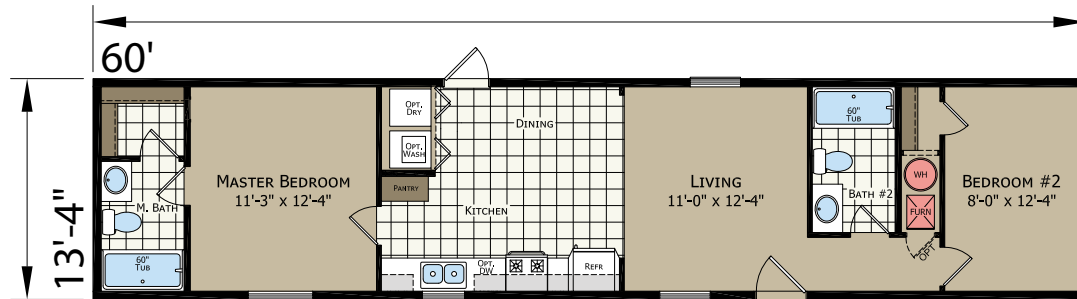




# F-24805

13'-4" x 60'  
2 bed-2 bath  
800 sq. ft.

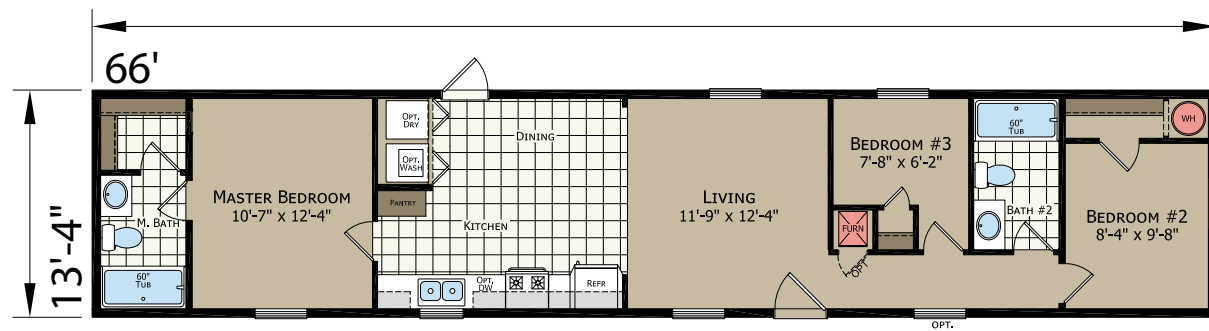
60'  
OPTION



# F-24805

13'-4" x 66'  
3 bed-2 bath  
880 sq. ft.

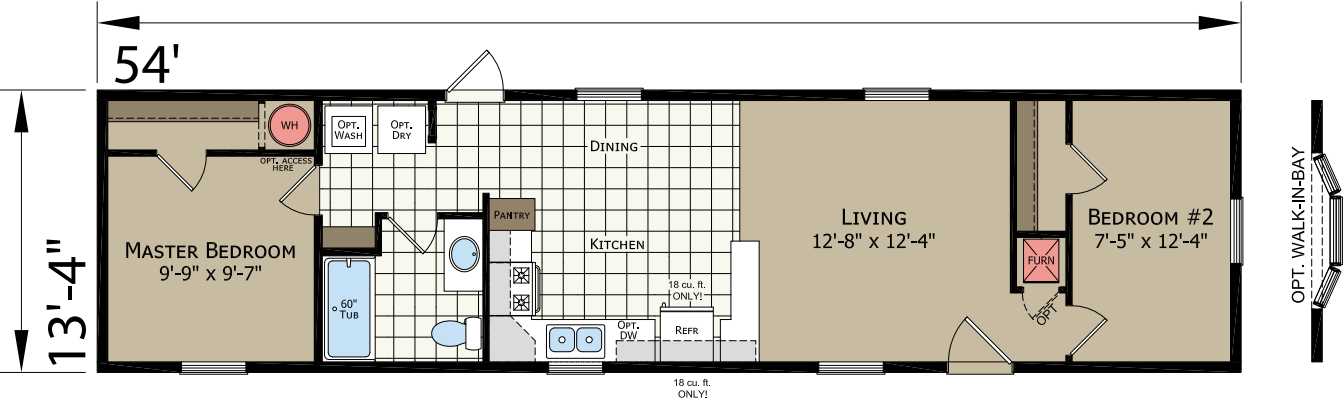
66'  
OPTION



F-25401

13'-4"x 54'  
2 bed-1 bath  
720 sq. ft.

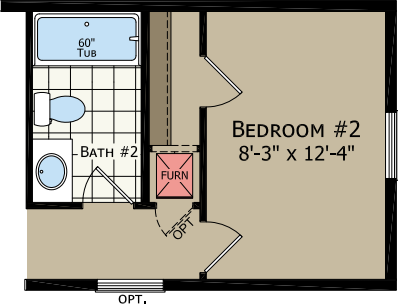
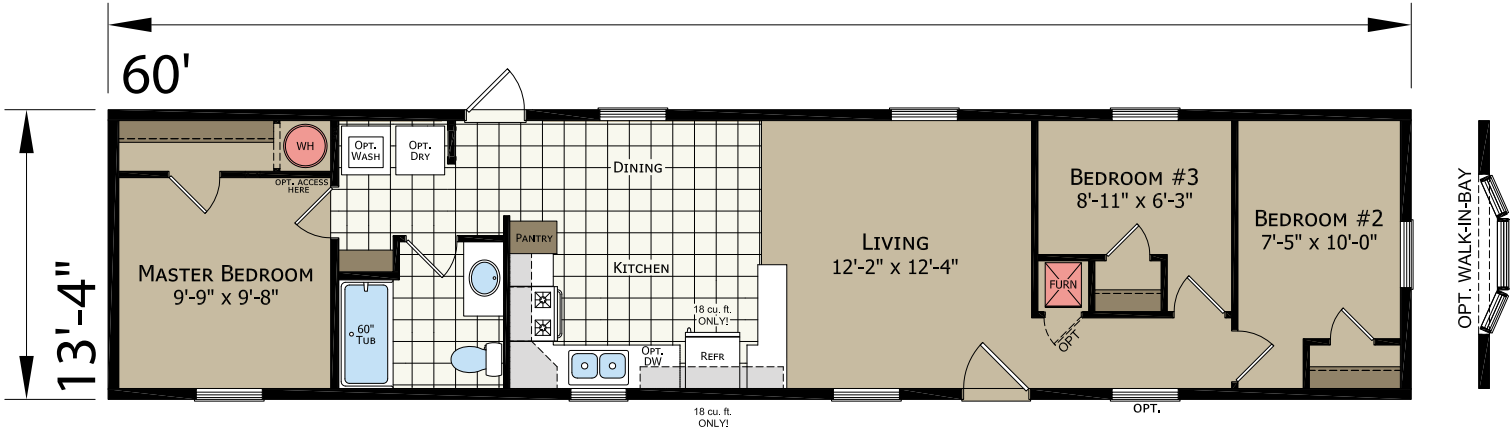
54'  
OPTION



F-25401

13'-4"x 60'  
3 bed-1 bath  
800 sq. ft.

60'  
OPTION



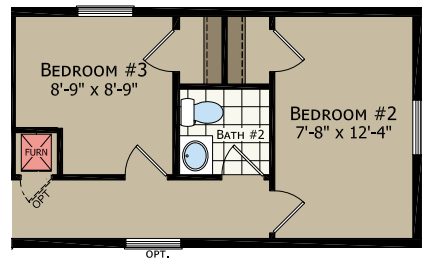
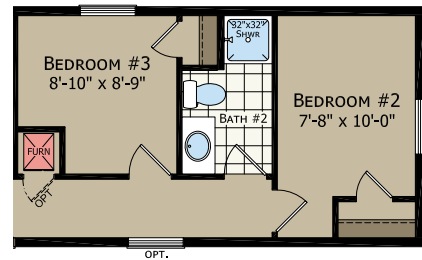
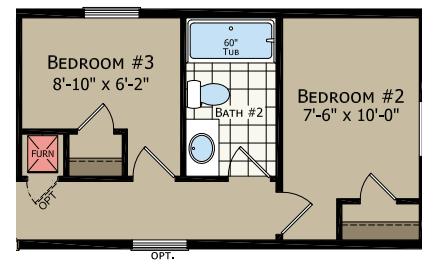
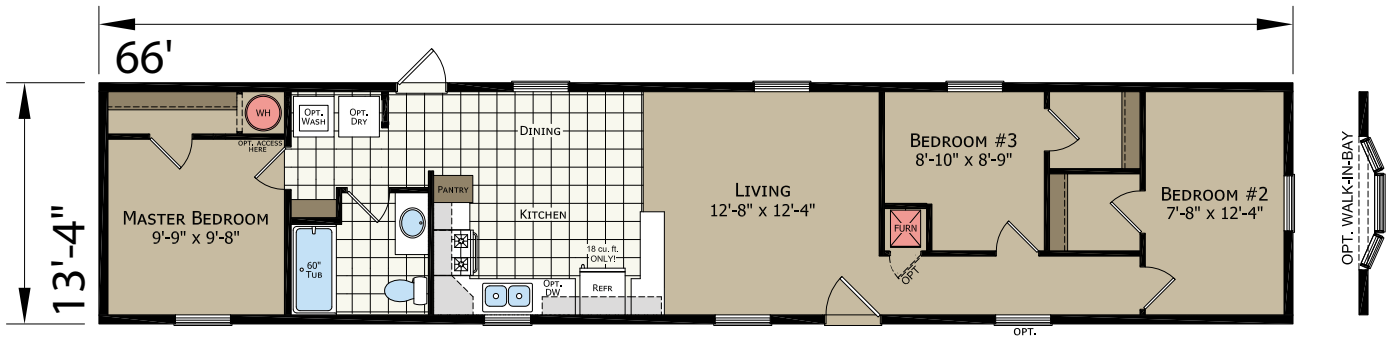
2 BED / 2 BATH VERSION



# F-25401

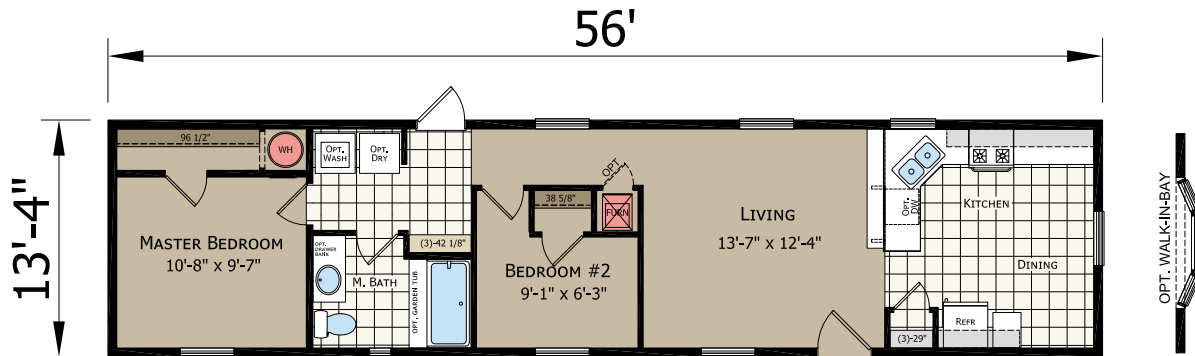
13'-4" x 66'  
3 bed-1 bath  
880 sq. ft.

66'  
OPTION



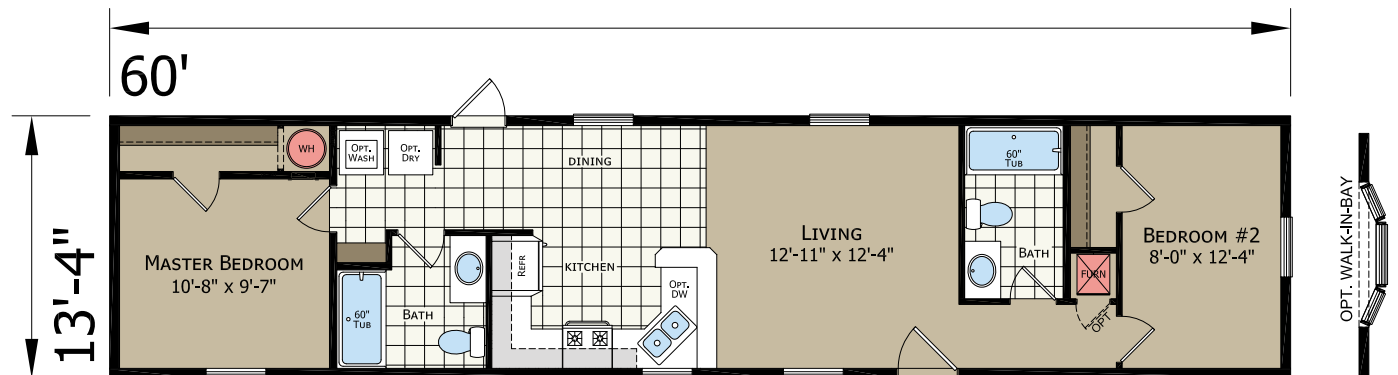
# F-45626

13'-4" x 56'  
2 bed-1 bath  
746 sq. ft.



# F-46025

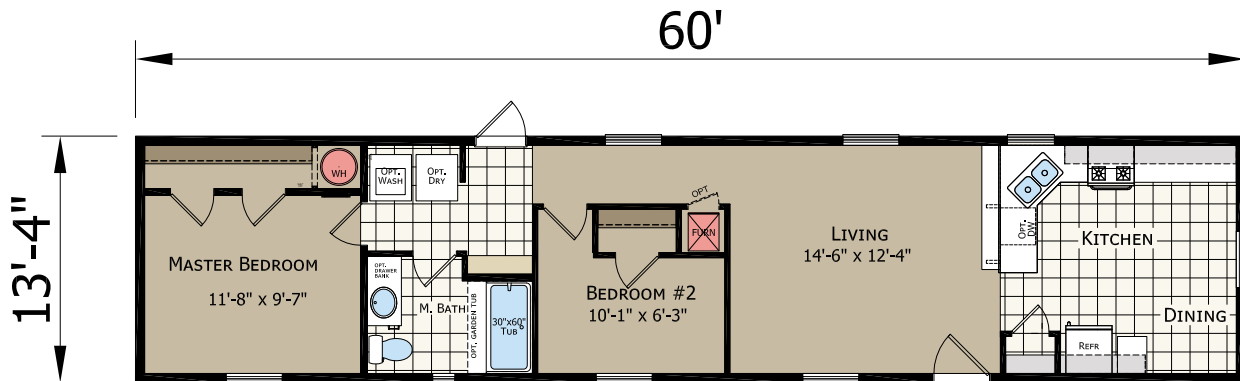
13'-4" x 60'  
2 bed-2 bath  
800 sq. ft.



# F-26005

13'-4" x 60'  
2 bed-1 bath  
800 sq. ft.

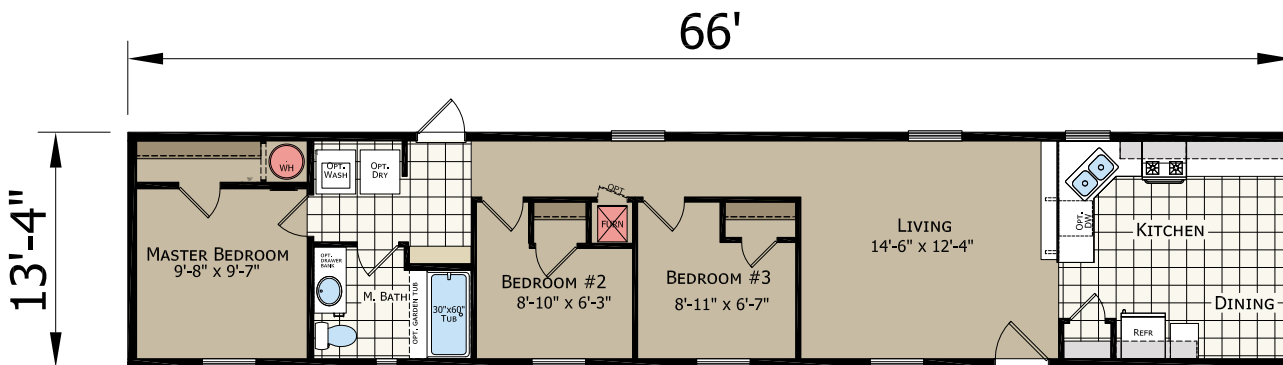
60'  
OPTION



# F-26005

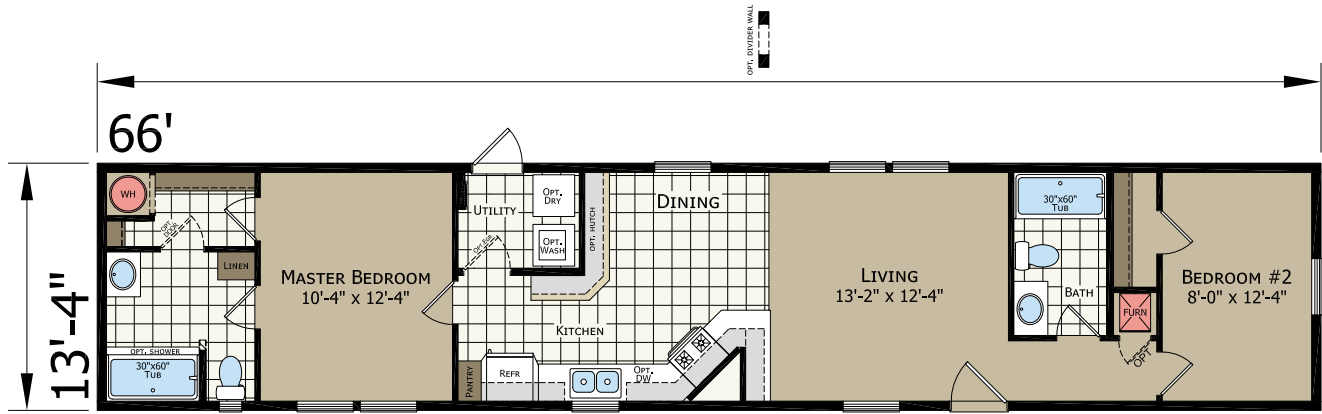
13'-4" x 66'  
3 bed-1 bath  
880 sq. ft.

66'  
OPTION



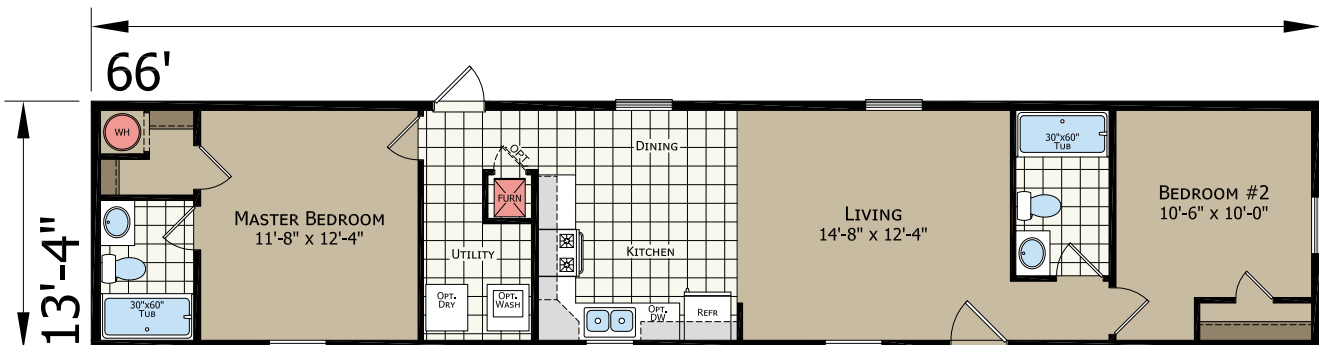
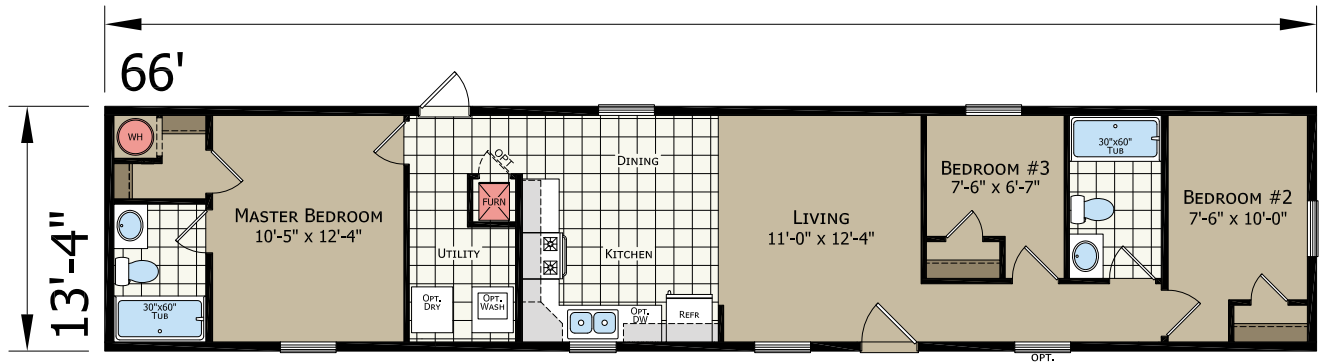
# F-26628

13'-4"x 66'  
2 bed-2 bath  
880 sq. ft.



# F-26610

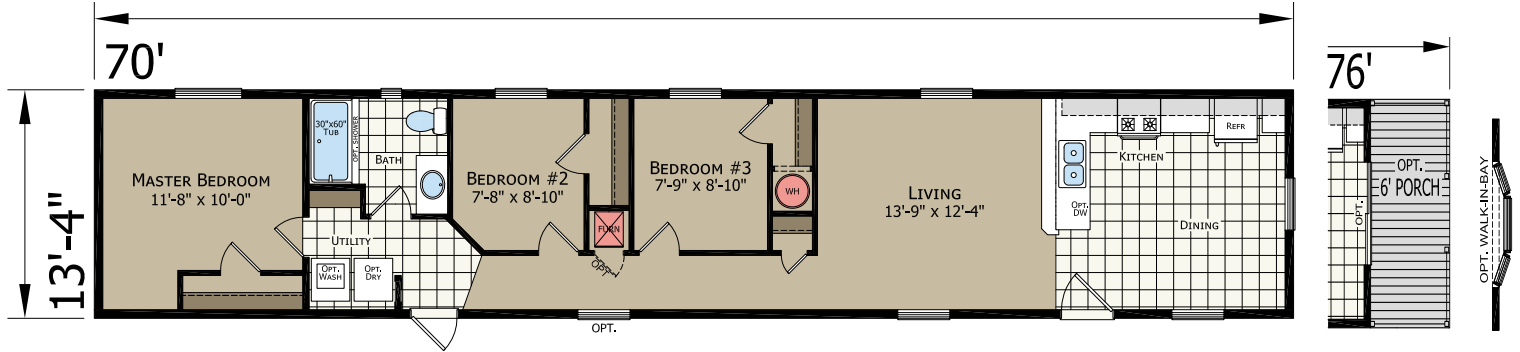
13'-4"x 66'  
3 bed-2 bath  
880 sq. ft.



OPT. 2 BEDROOM

# F-27025

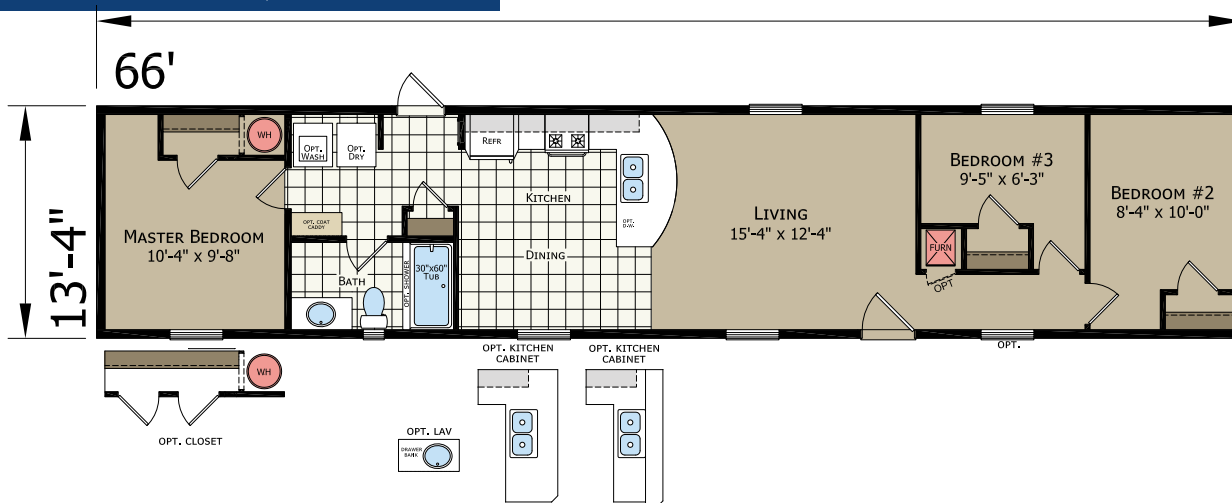
13'-4" x 70'  
3 bed-1 bath  
933 sq. ft.



# F-26601

13'-4" x 66'  
3 bed-1 bath  
880 sq. ft.

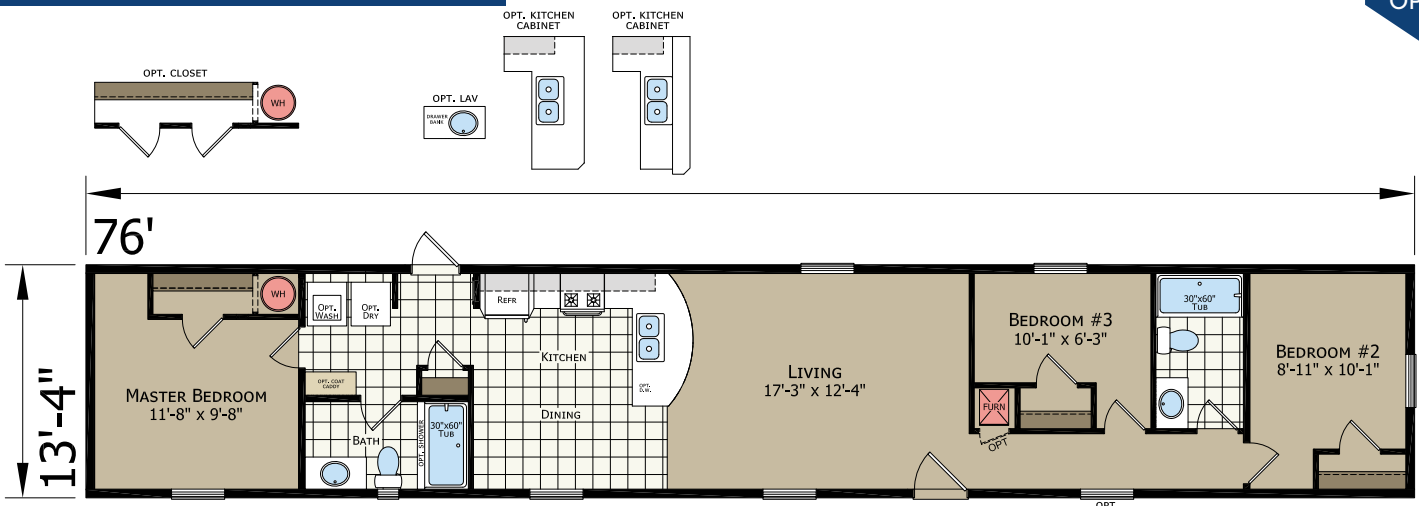
66'  
OPTION



# F-26601

13'-4" x 76'  
3 bed-2 bath  
1013 sq. ft.

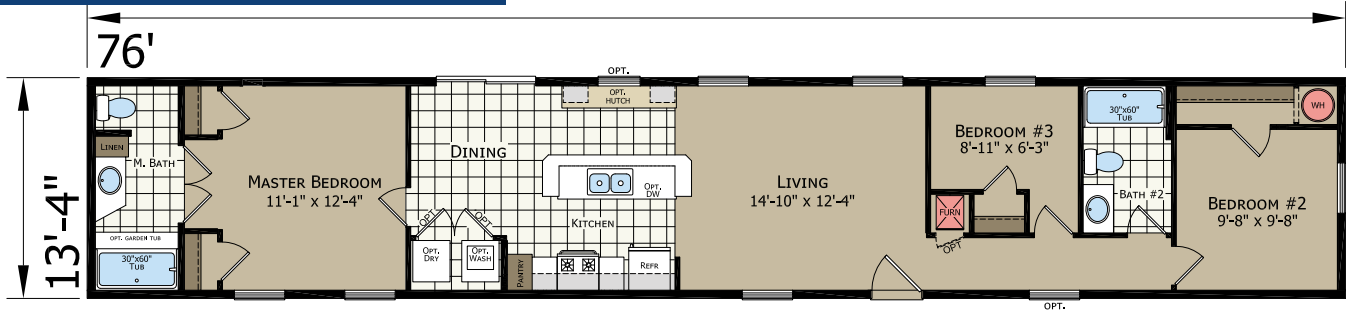
76'  
OPTION





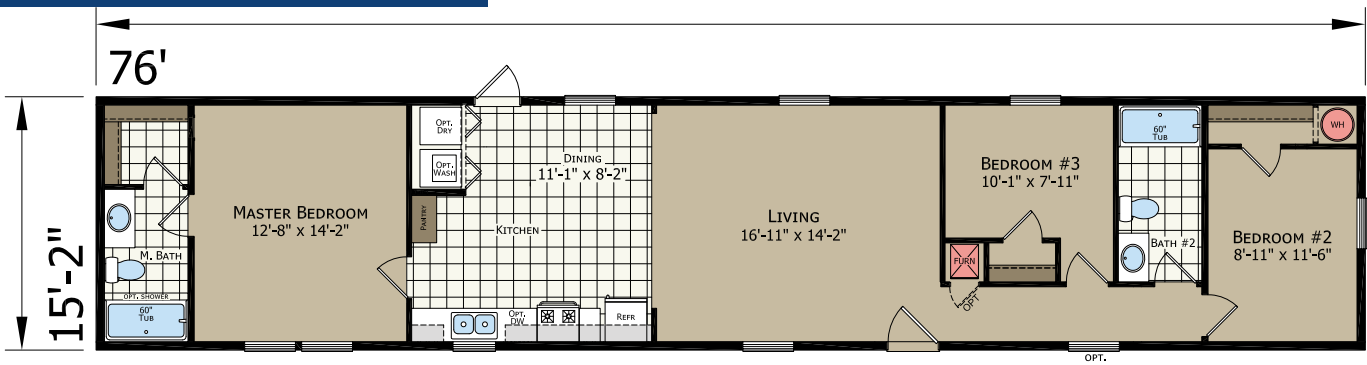
# F-27625

13'-4" x 76'  
3 bed-2 bath  
1013 sq. ft.



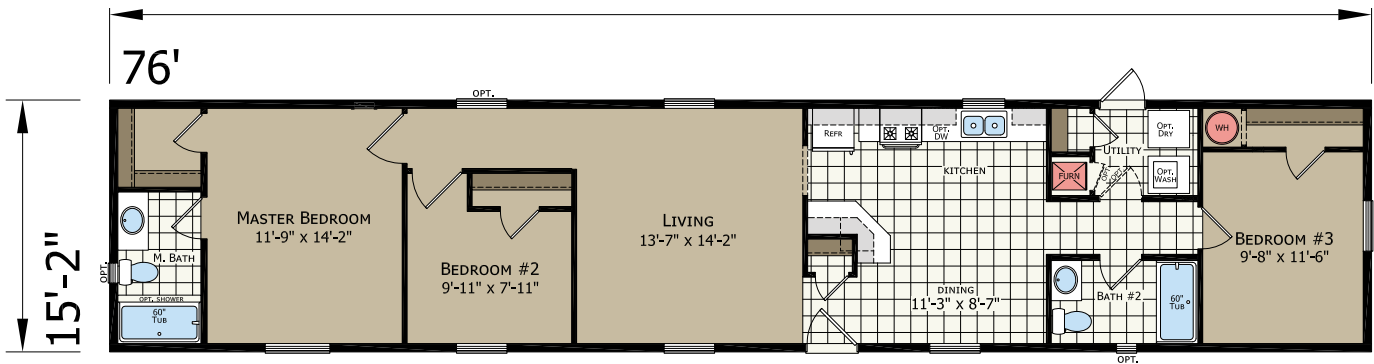
# L-24805

15'-2" x 76'  
3 bed-2 bath  
1152 sq. ft.



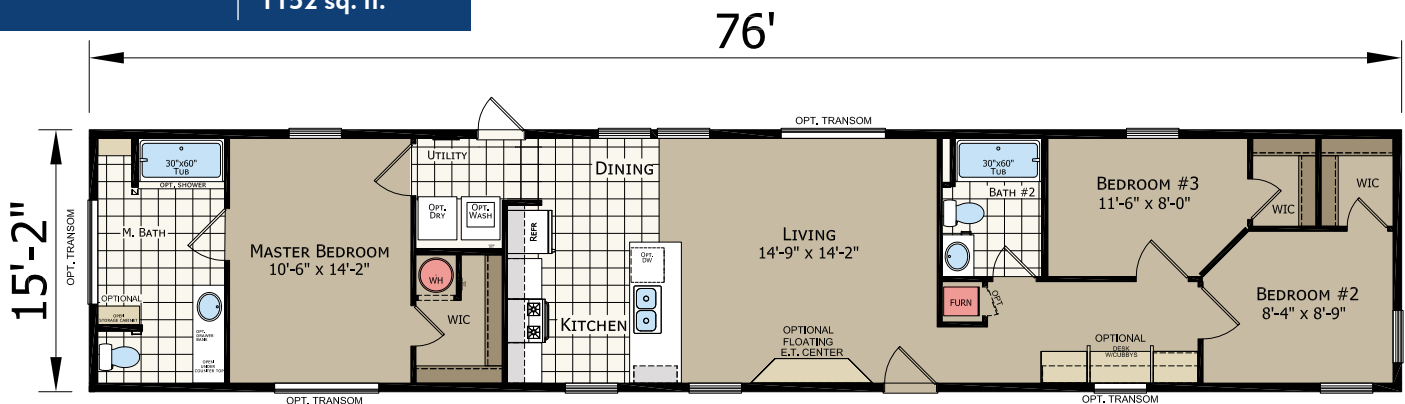
# L-27602

15'-2" x 76'  
3 bed-2 bath  
1152 sq. ft.



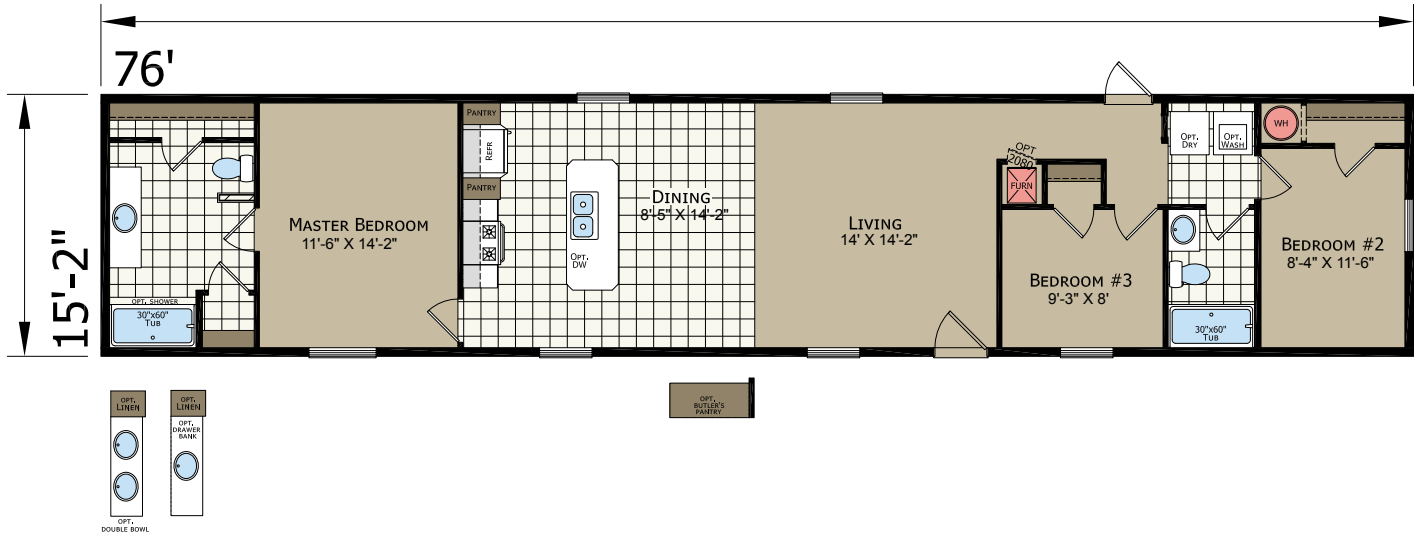
# L-27616

15'-2" x 76'  
3 bed-2 bath  
1152 sq. ft.



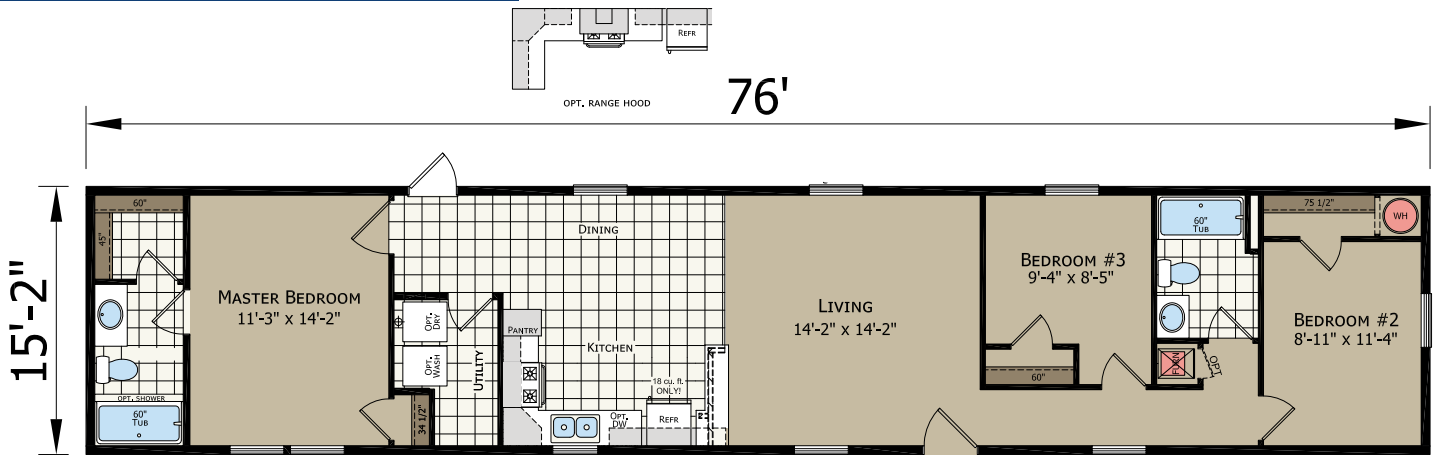
# L-27606

15'-2"x 76'  
3 bed-2 bath  
1152 sq. ft.



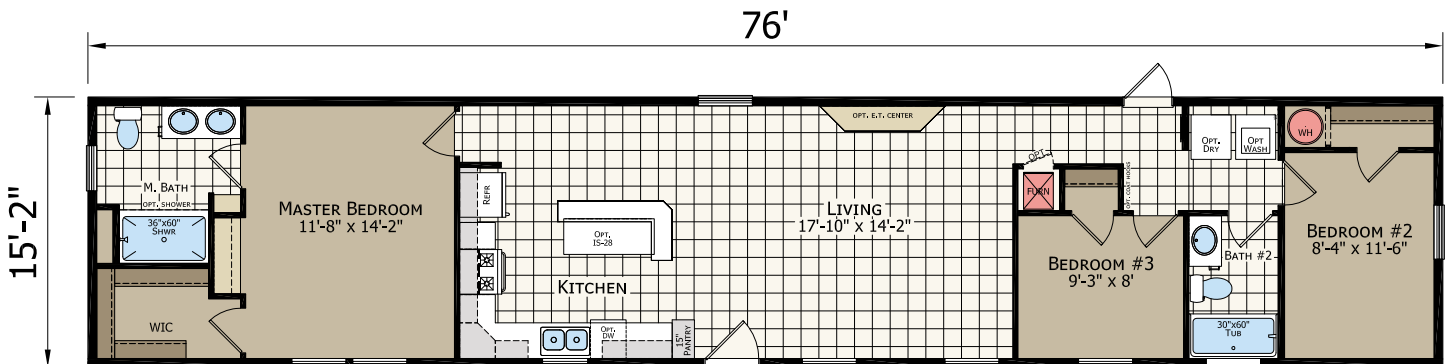
# L-27607

15'-2"x 76'  
3 bed-2 bath  
1152 sq. ft.



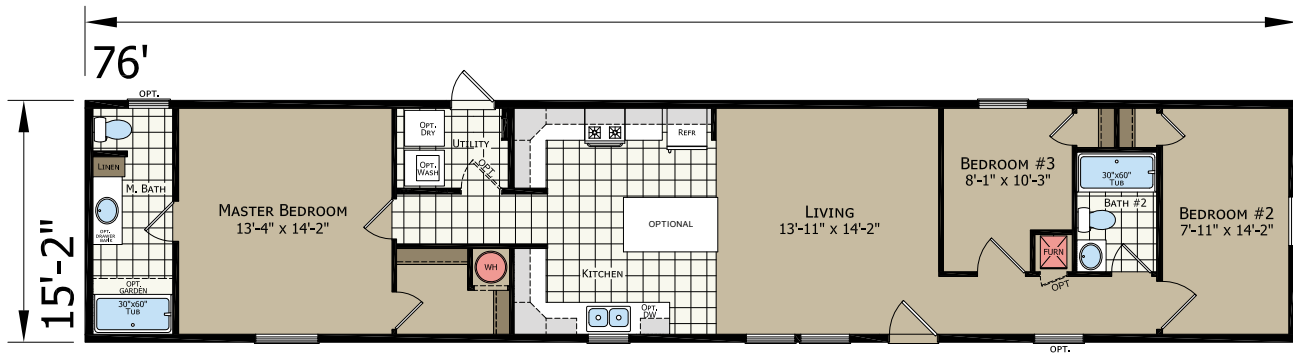
# L-27618

15'-2"x 76'  
3 bed-2 bath  
1152 sq. ft.



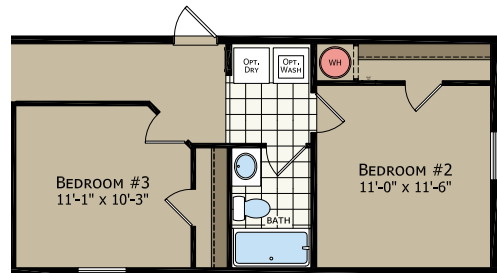
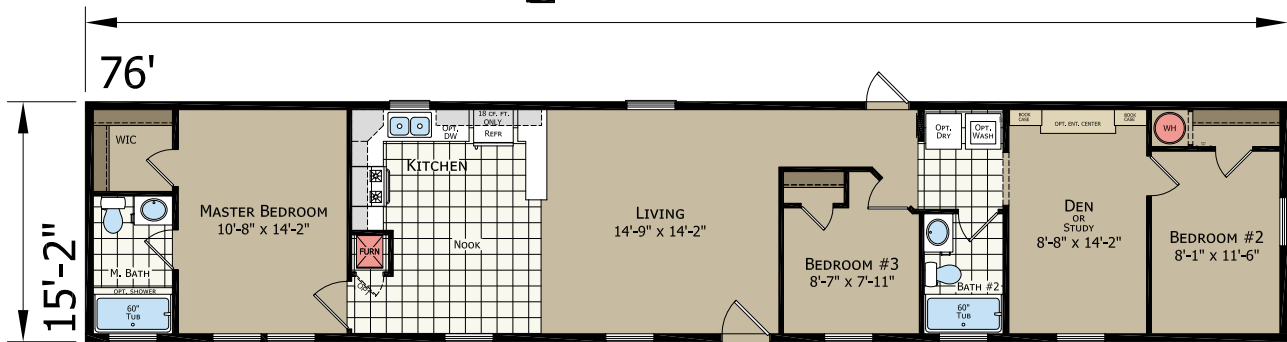
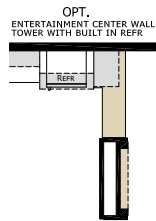
# L-27610

15'-2" x 76'  
3 bed-2 bath  
1152 sq. ft.



# L-27612

15'-2" x 76'  
3 bed-2 bath  
1152 sq. ft.



# STANDARD FEATURES

## CONSTRUCTION

- 2x6 Floor Joists 16" O.C.
- 2X6 Sidewalls 16" O.C.
- 20 lb. Roof 24" O.C.
- 8' Sidewalls | Flat Stomped Ceilings
- Foamcore Sheathing
- Marriage Line Gasket
- Soffit/Fascia/Drip Edge
- Vinyl Covered Drywall Throughout
- Molding to Match Cabinetry Throughout
- Double 4.5" Dutch Lap Vinyl Exterior Siding
- Louvered Panel Shutters FDS and Hitch End plus White Scalloped Hitch End Treatment
- 3-Tab 25-Year Shingles with Ridge Vent
- Heat Tape Receptacle

## ELECTRIC

- 100 Amp Electric Service
- LED Recessed Can at Kitchen
- Vanity Lights in Bathrooms
- Switched Receptacles in Living Room & Bedrooms
- LED Recessed Can in Dining Room
- White Exterior Lights Rear
- Wire & Vent for Electric Dryer

## BATHS

- GFI Receptacle
- Dual Knob Faucets
- Towel Bar & Tissue Holders
- 36" Vanity Height | Plastic Sinks
- Mirror at Vanity (s)
- Laminate Countertop, Edge & Backsplash
- Porcelain Toilet
- Curtain Rod at Tub

## KITCHEN

- 6" Stainless Steel Kitchen Sink
- 18 Cu Ft Refrigerator
- 30" Deluxe Gas Range
- Power Vent Range Hood
- GFI Receptacle
- Laminate Countertop, Edge & Backsplash
- Wood Cabinet Doors | MDF Stiles
- Bank of Drawers
- Fixed Overhead Shelf
- Cabinet Cove on Overhead Cabinets

## PLUMBING & HEATING

- Whole House Interior Water Shut-off
- Plumb for Washer
- In-line Heat Ducts
- Gas Furnace with Thermostat
- 30-Gallon Electric Water Heater

## MISCELLANEOUS

- Combo Smoke/CO Detectors Per Code
- Shaw® Carpet
- Carpet Pad
- Vinyl in Wet Areas
- 2-Panel White Interior Doors with Knobs
- Vented Shelves in Closets
- Wire Shelf over Washer/Dryer Area
- Mini Blinds Throughout
- R-11 Floor Insulation
- R-19 Sidewall Insulation
- R-22 Roof Insulation
- 38" x 82" Sunburst Fiberglass Front Door (No Storm)
- 34" x 82" Cottage Rear Door (No Storm)
- Deadbolts on Exterior Doors (Keyed Alike)
- 36" x 60" & 30" x 36" Low-E Gridded Vinyl Windows Per Plan
- Rod with Valance in Kitchen
- Choice of Décor







# ATLANTIC<sup>®</sup> HOMES

2551 Champion Drive  
Claysburg, PA 16625

[atlantichomespa.com](http://atlantichomespa.com)

CHAMPION<sup>®</sup>  
HOME BUILDERS