

PENNWEST
reserve

2023

La Bella Casa



PENNWEST
H O M E S



French Country Oak
Mission Flat Panel



Rustic Elm
Mission Flat Panel



Shadow Grey
Mission Flat Panel



Barnwood Oak
Mission Flat Panel



White
Mission Flat Panel

Visit www.KCMA.org
for more information

Precision Cut and Dadoed Construction Fastened and Hot Glued - Ensures a Long Lasting and Square Cabinet Box

3/4 Overlayed Cabinet Doors & Drawer - Limited Exposure of Cabinet Stiles

3/4" Thick Shelving with Finished Edges - Prevents Warping of Shelves

Base and Wall Cabinet Adjustable Shelving - Fit Your Lifestyle

3/4" Face Frames - Durable and Securely Holds Fasteners for Long Lasting Use

Pocket Screws - Ensure a Strong and Square Frame

Dove-Tail Constructed Drawers - Superior Drawer Strength

Undermount Soft Close Drawer Guides

Concealed and Recessed Hinges - Superior Door Strength

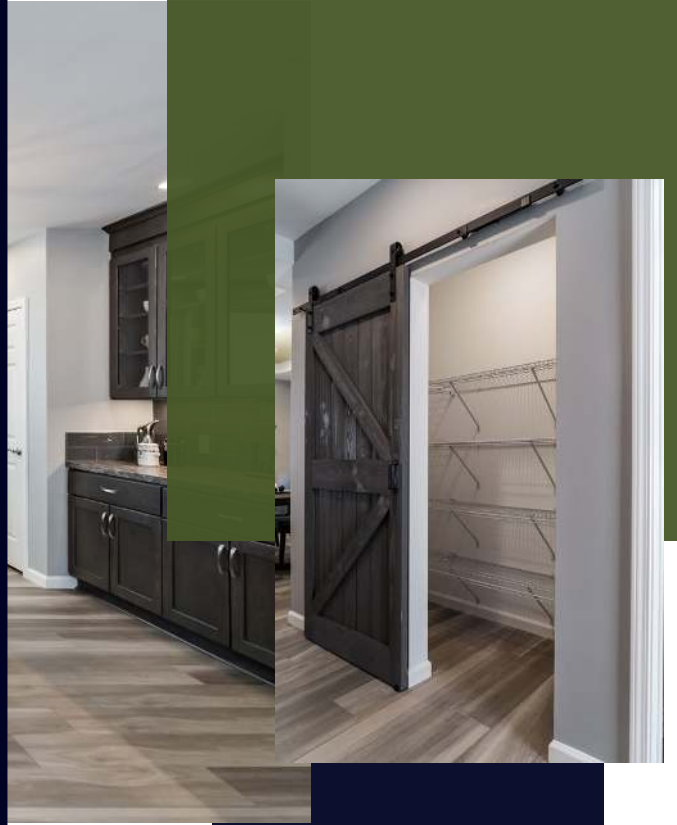
Recessed Toe Kick - Work at Counters with Ease

No Exposed Hanging Cleats- More Storage and Cleaner Look

KCMA Testing

- Overhead Cabinets Rated to 500 pound Capacity
- Drawers Opened 28,000 Times with Weight
- Cabinet Doors Opened 25,000 Times
- Extreme Testing of Cabinet Finish

Evermore Custom Cabinets endure a series of rigorous tests, measuring structural integrity. Cabinet doors, drawers and even the finish are tested before earning the KCMA Cabinet Certification.





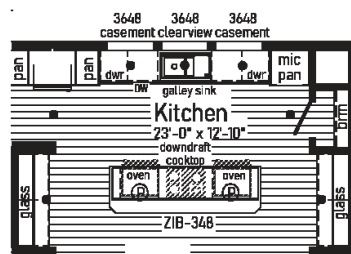
01

La Bella Casa

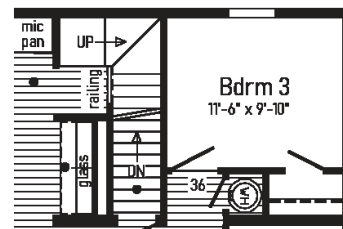
2P2801R
28x64 Approx. 1749 sq ft



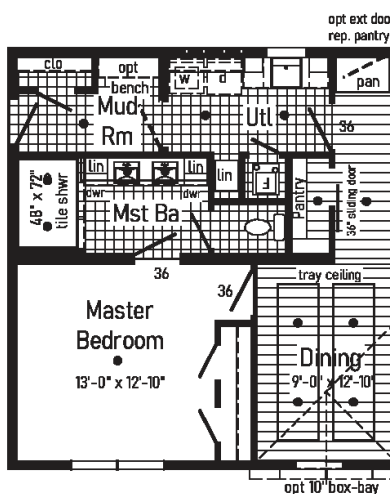
Optional
4'x6' Walk-In
Tile Shower



Alternate Kitchen

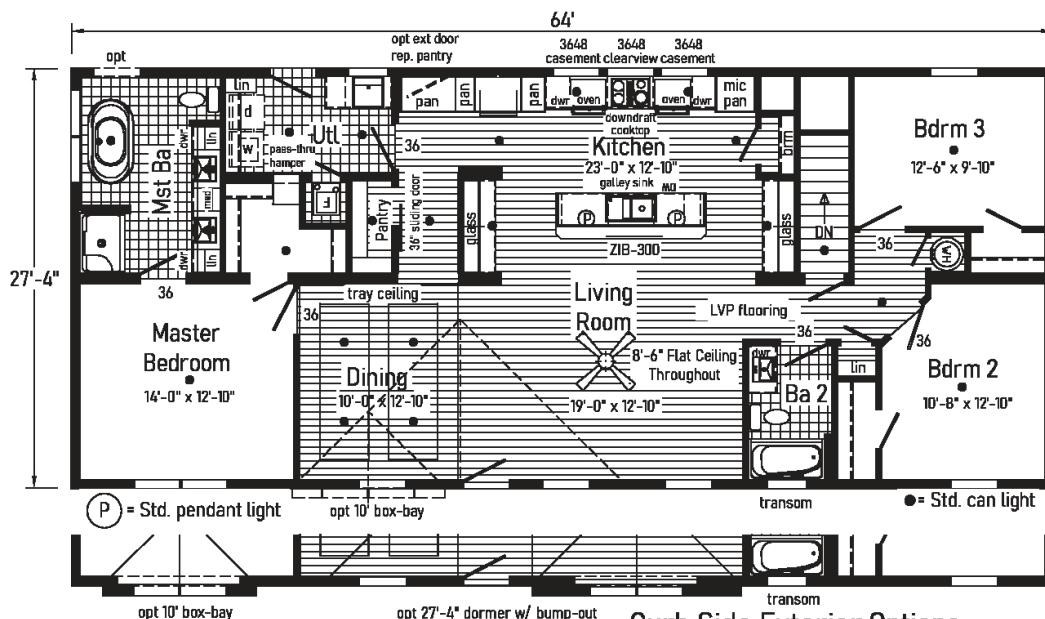


Opt. Open
Attic Stairs
Only available
with 12/12 roof



Optional End Entry Utility with
4' x 6' Walk-In Tile Shower

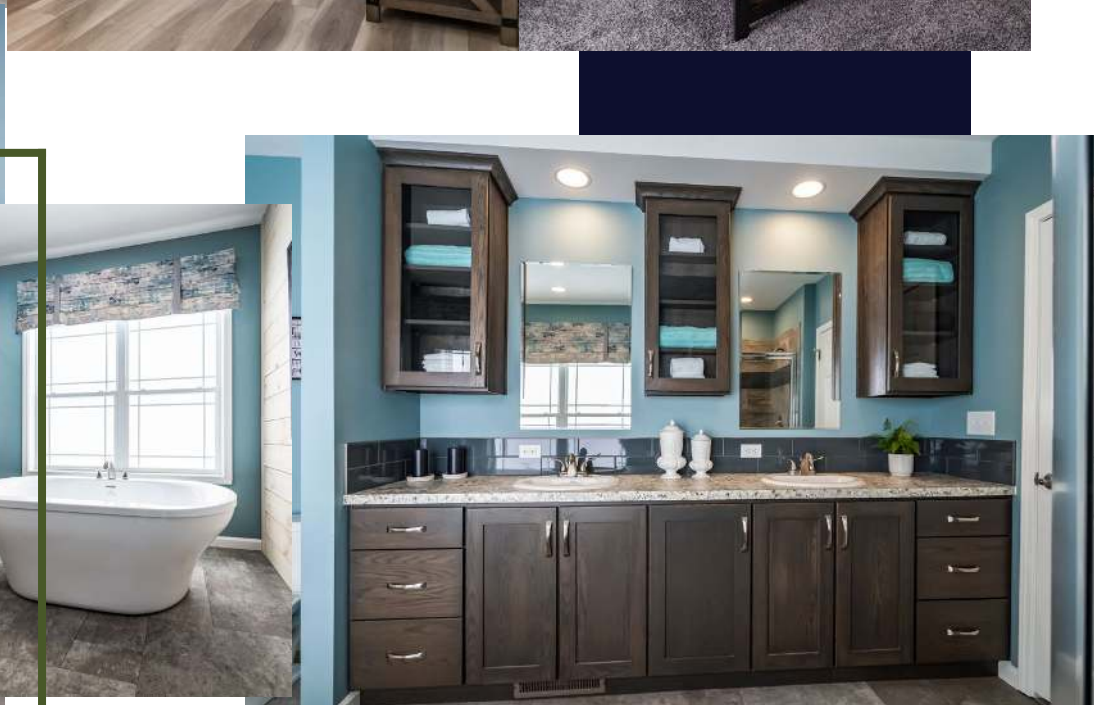
Note: Changes Living Room size to 18'-8" x 12'-10".



Curb Side Exterior Options



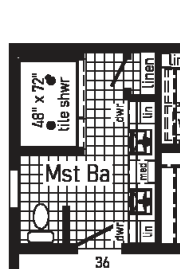
Scan to Watch Video!



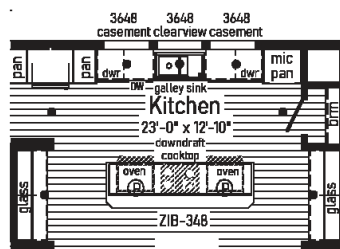


02 La Bella Casa

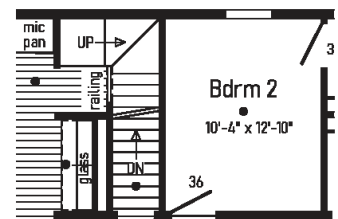
2P2802R
28x68 Approx. 1859 sq ft



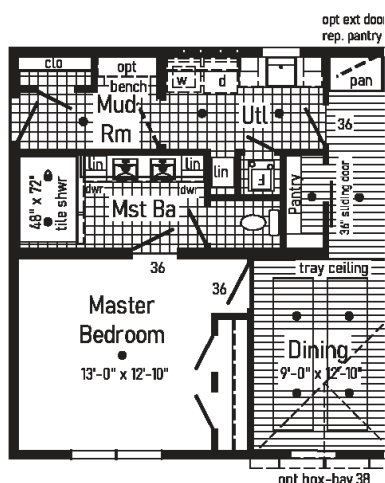
**Optional
4'x6' Walk-In
Tile Shower**



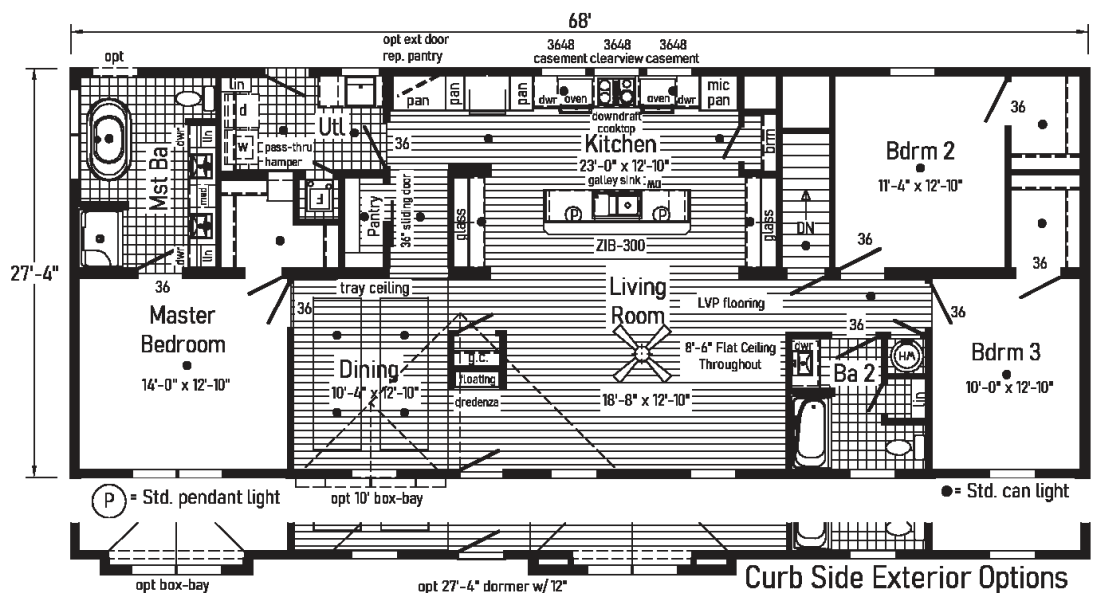
Alternate Kitchen



**Opt. Open
Attic Stairs**
Only available
with 12/12 roof



**Optional End Entry Utility with
4' x 6' Walk-In Tile Shower**



Curb Side Exterior Options

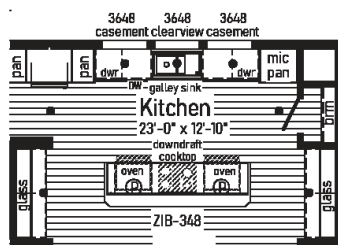


03 La Bella Casa

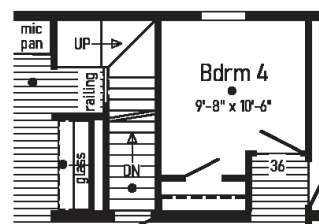
2P2803R
28x72 Approx. 1968 sq ft



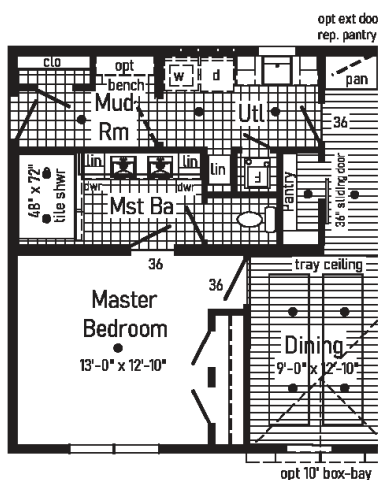
Optional
4'x6' Walk-In
Tile Shower



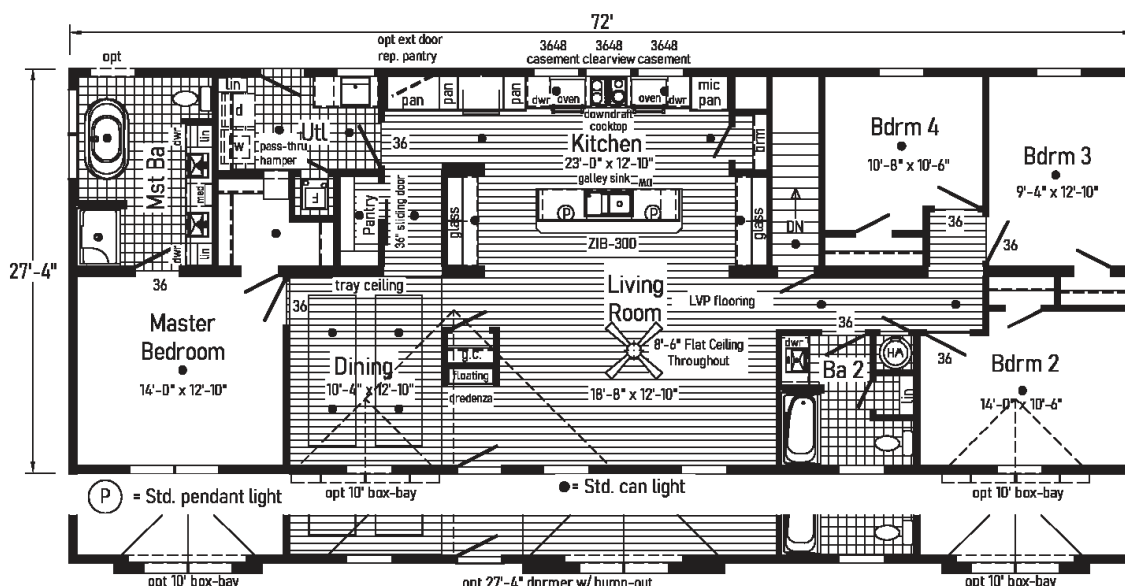
Alternate Kitchen



Opt. Open
Attic Stairs
Only available
with 12/12 roof



Optional End Entry Utility with
4' x 6' Walk-In Tile Shower

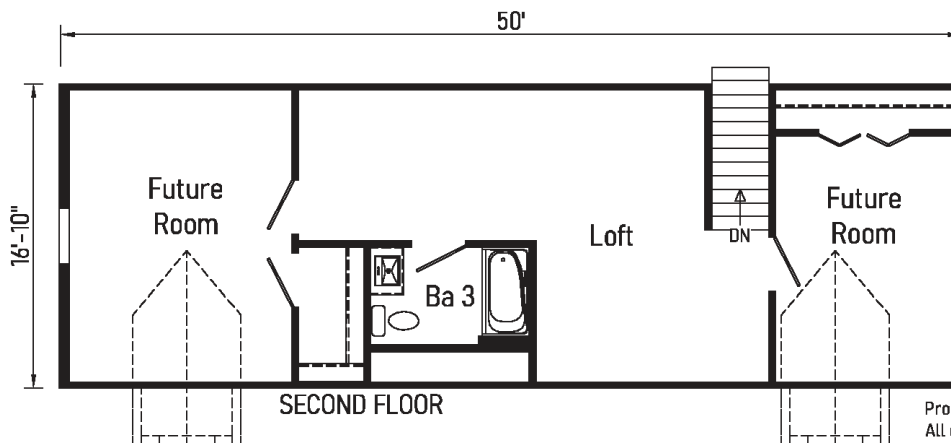


Curb Side Exterior Options

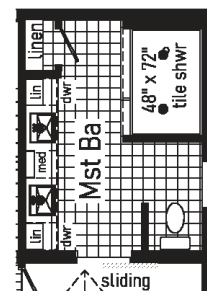
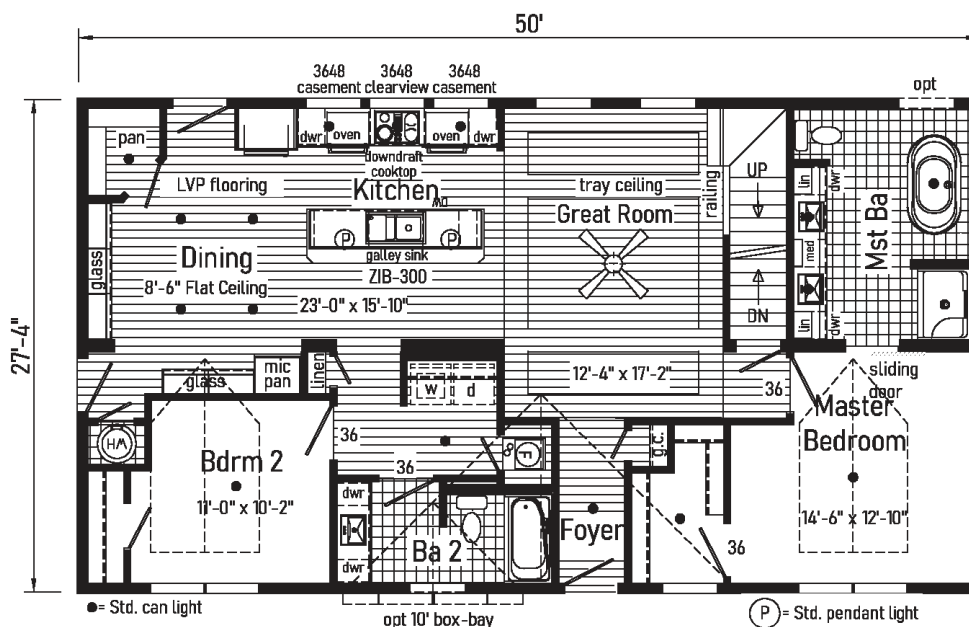
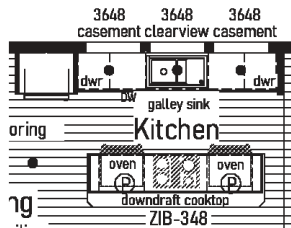
05

La Bella Casa

2PC2801R
28x50 Approx. 1367 sq ft



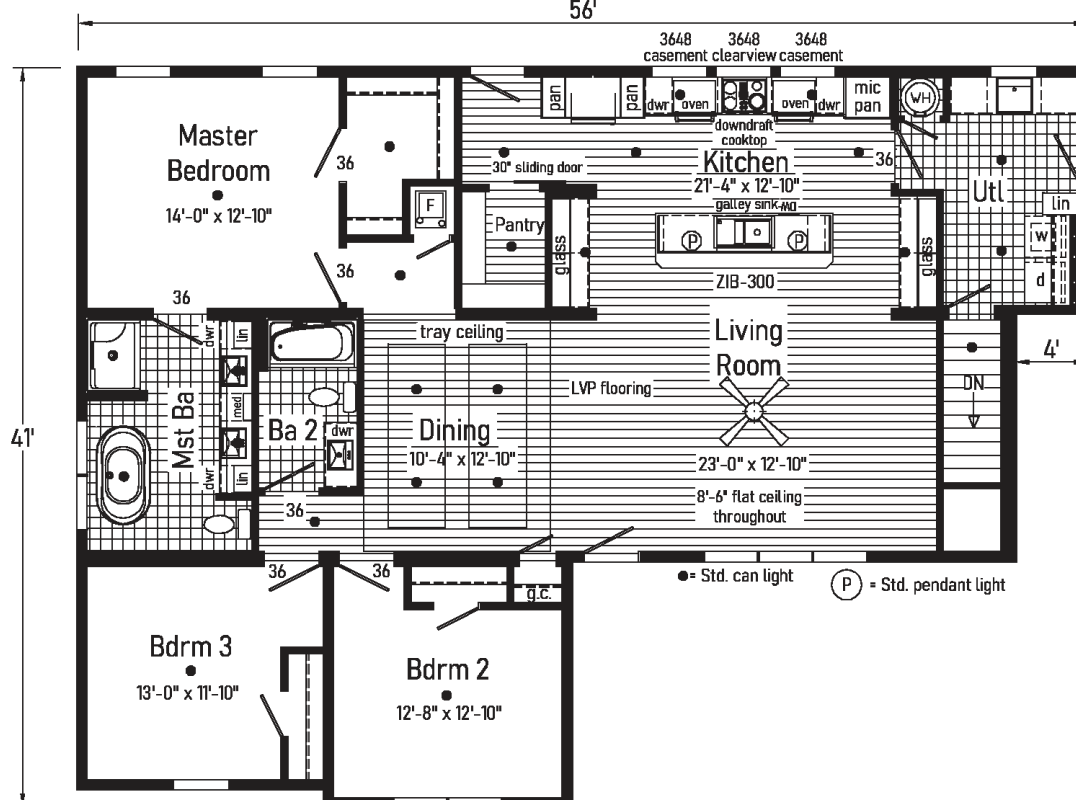
Proposed Second Floor:
All design materials and work to be the responsibility of the builders on site to local codes. Light, vent, egress, heating and plumbing are the responsibility of the builder.



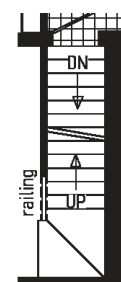
**Optional
4'x6' Walk-In
Tile Shower**



Alternate Kitchen



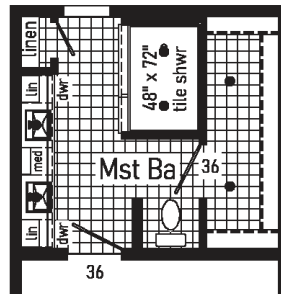
Only available with
12/12 roof



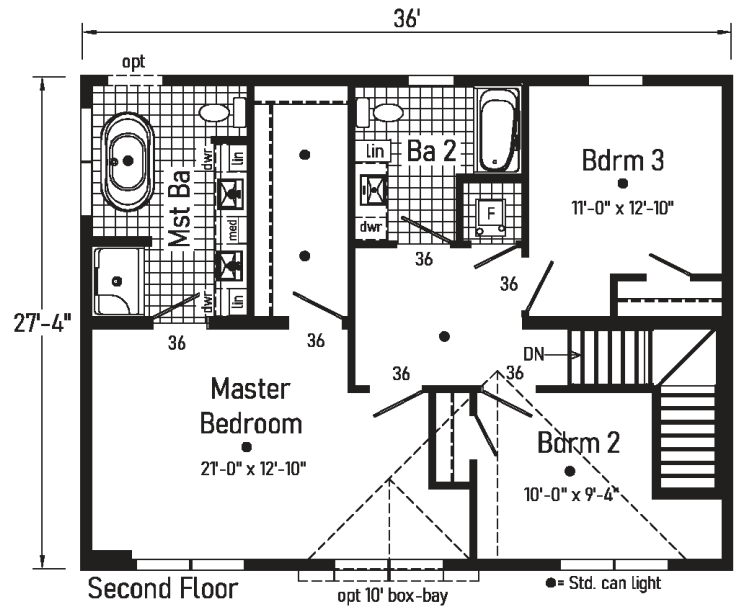
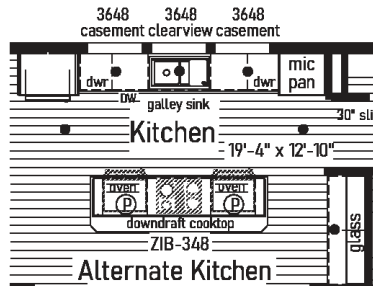
07

La Bella Casa

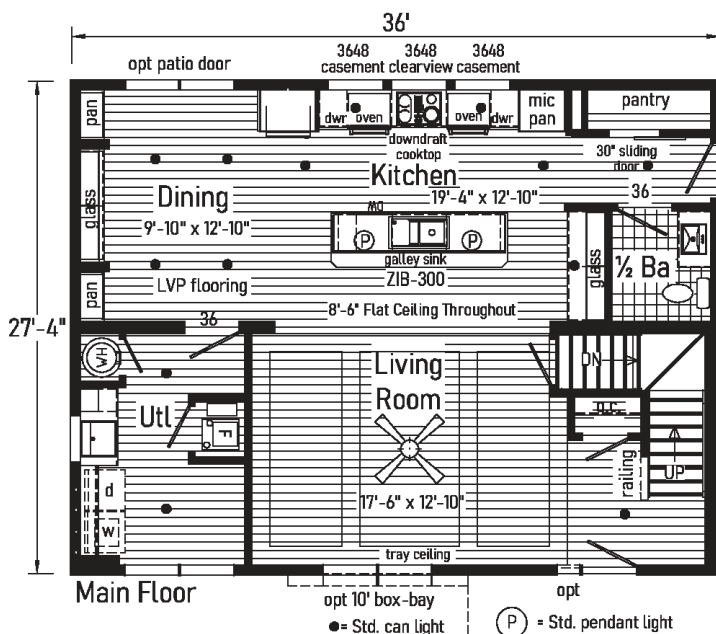
6P2801R
28x36 Approx. 1968 sq ft



**Optional
 4'x6' Walk-In
 Tile Shower**



Second Floor



Main Floor

Garage by
 Others



70
YEARS



2023

PENNWEST
reserve
R

Pennwest Homes
4 Pennwest Way Route 38
Emlenton, PA 16373
www.pennwesthomes.com

La Bella Casa

Connect with Us!

