



PENNWEST  
H O M E S

# OPTIONS BROCHURE

*Guide*

# Table of Contents

## EXTERIOR OPTIONS

Exteriors	3
Dormers	4-5
Exterior Doors	6
Patio Doors	7
Windows	8



## INTERIOR OPTIONS

Backsplashes	9
Cabinets	10
Kichen Cabinet Profiles	11
Kitchen	12-13
Kitchen Sinks	14
Bathroom	15-17
Faucets	18
Universal Lifestyle	19
Lighting	20
Electrical	21
inHouse Experience	22
Fireplaces	23
Interior Doors & Stairs	24
Ceilings	25
Utility Room	26
Extras	27



Making Dream Surfaces Attainable



INNOVATIONS FOR LIVING



# EXTERIORS



## Le Fantastique

Cypress Siding • Vertical Siding in Clay  
Shake Siding Accent on Dormer Bump-out (Clay) • White Lineals on Windows  
Recessed Entry • Architectural Shingles



## Ultra 6

Market Square Carbon Siding • White Shake Siding Accents • 3/4 Lite Front Door  
Prairie Grid Windows • 10' Small Panelized Door w/ Dutch Eaves • White Lineals  
6' Cape Dormer • Set Back Twin Peak Dormer • Architectural Shingles



## Optional Foyer Pod Addition



# DORMERS



Flush Dormer  
(Available in 10', 12', 18'-8" & 22')



Flush Dormer with Dutch Eaves  
(Available in 10', 12', 18'-8" & 22')



27'-4" Twin Peak with 13'-8" Bump-Out



Cape Dormer  
Available in 6' (shown left & right) & 8' (shown middle)  
\*Note: Arch Window N/A



Twin Peak Dormer with Dutch Eaves  
(Available in 22' and 27'-4")



Flush Dormer with optional bump out



Shed Roof Dormer for 12/12 Roofs  
Only

- Shown with Optional Windows
- See Sales for Available Lengths



6' Shed Roof Cape Dormer - 2 Shown



Curbside with Bump-Out (flush dormer with dutch eaves and twin peak with bump-out with dutch eaves)

# EXTERIOR DOORS



Clear Glass  
1/2 Lite 2-Panel



Clear Glass  
Full Lite



Clear Glass 9-Lite  
2-Panel



Clear Glass 15-Lite



Clear Glass  
Craftsman 1/4 Lite  
2-Panel



Clear Glass  
Full Sidelite



Pembrook  
Craftsman 1/4 Lite  
w/Shelf



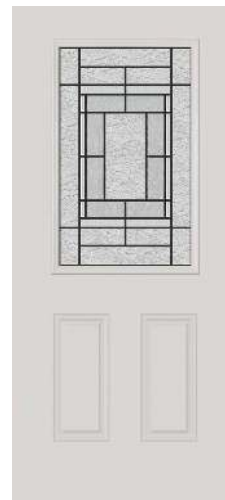
Pembrook  
Craftsman  
Full Sidelite



Pembrook  
Craftsman 1/4 Lite  
2-Panel



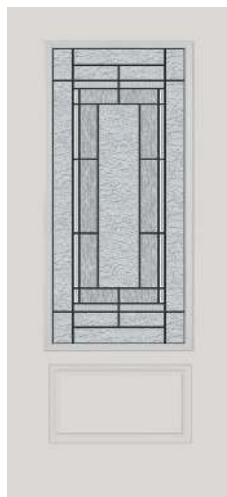
Pembrook  
Full Sidelite



Pembrook 1/2 Lite  
2-Panel



Pembrook  
1/2 Sidelite



Pembrook 3/4 Lite  
1-Panel



Pembrook  
3/4 Sidelite

\*Note: Sidelites only available with the door they are shown with. Cannot mix & match.



Kwikset Exterior  
Lock Sets w/ Smart Key

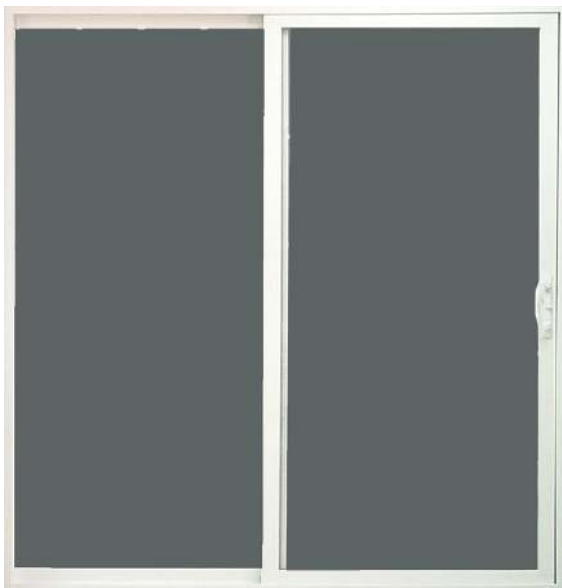
# PATIO DOORS



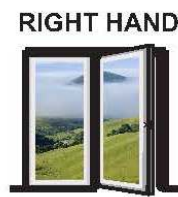
Clear Glass 15-Lite Patio Doors



Clear Glass Full Lite Patio Doors



Vinyl Glass Sliding Door  
(grids available)



Single Active Center Swing  
Atrium Doors



passive active active passive

Double Active French Doors

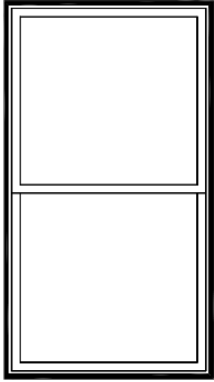
\*All Pennwest series doors are Standard White. Also Available in Desert Sand for Clay Package

## Composite Frame System

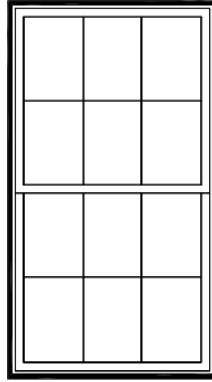
Closed cellular structure ensures doorframe and molding will not absorb moisture and resists splitting, rotting and insect damage



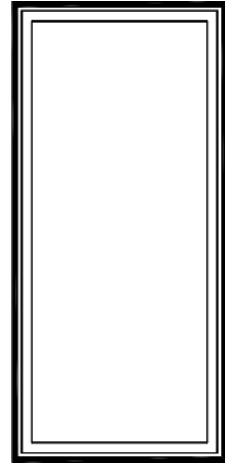
# WINDOWS



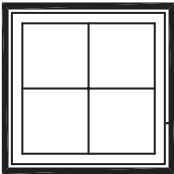
Non-Gridded Windows  
- STANDARD



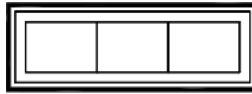
6 over 6 Window Grids  
- Optional



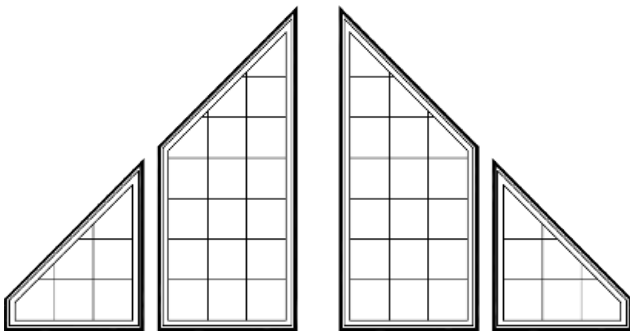
Clearview Windows  
30" x 66"



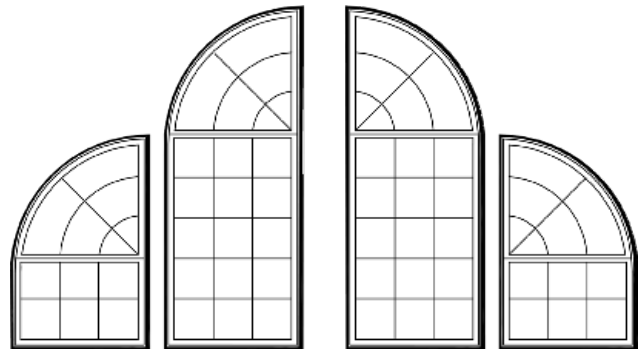
2/0 2/0  
Fixed  
Window  
Grids Optional



Transom Window - Where available  
Shown here with Optional Grids  
Available in 12" and 18"



Chalet Trapezoid Windows  
- Grids Optional

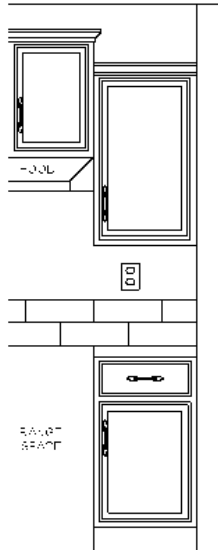


Chalet Windows  
- Grids Optional

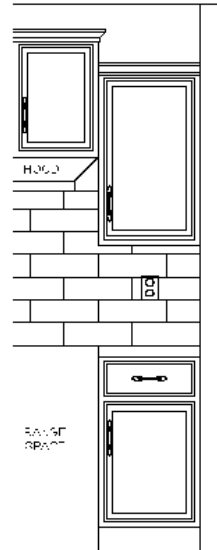


# BACKSPLASHES

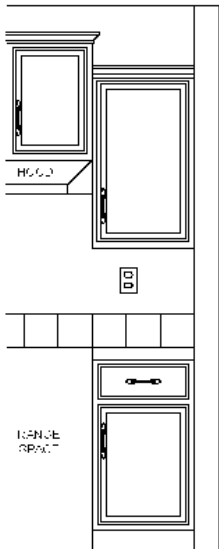
MIDDLETOWN SQUARE 4X12  
CERAMIC BACKSPLASH



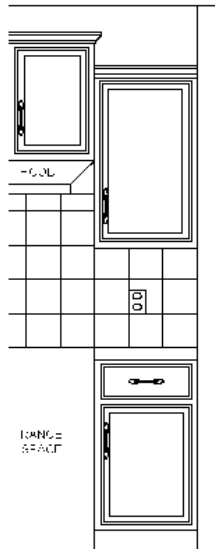
MIDDLETOWN SQUARE FULL  
4X12 CERAMIC BACKSPLASH



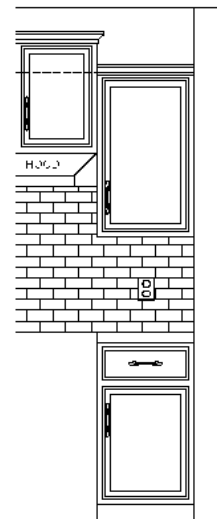
OLARIA 6X6 CERAMIC  
BACKSPLASH



OLARIA 6X6 FULL  
CERAMIC BACKSPLASH



GROUTLESS MOSAIC  
12X18 FULL CERAMIC  
BACKSPLASH



# CABINETRY



Precision Cut and Dadoed Construction Fastened and Hot Glued - Ensures a Long Lasting and Square Cabinet Box

3/4 Overlaid Cabinet Doors & Drawer - Limited Exposure of Cabinet Stiles

3/4" Thick Shelving with Finished Edges - Prevents Warping of Shelves

Base and Wall Cabinet Adjustable Shelving - Fit Your Lifestyle

3/4" Face Frames - Durable and Securely Holds Fasteners for Long Lasting Use

Pocket Screws - Ensure a Strong and Square Frame

Dove-Tail Constructed Drawers - Superior Drawer Strength

Undermount Soft Close Drawer Guides

Concealed and Recessed Hinges - Superior Door Strength

Recessed Toe Kick - Work at Counters with Ease

No Exposed Hanging Cleats- More Storage and Cleaner Look

## KCMA Testing

- Overhead Cabinets Rated to 500 pound Capacity
- Drawers Opened 28,000 Times with Weight
  - Cabinet Doors Opened 25,000 Times
  - Extreme Testing of Cabinet Finish

Evermore Custom Cabinets endure a series of rigorous tests, measuring structural integrity. Cabinet doors, drawers and even the finish are tested before earning the KCMA Cabinet Certification.

Visit [www.KCMA.org](http://www.KCMA.org)  
for more information



French Country Oak  
Mission Flat Panel



Shadow Grey  
Mission Flat Panel



Barnwood Oak  
Mission Flat Panel



Rustic Elm Oak  
Mission Flat Panel



White  
Mission Flat Panel



# KITCHEN CABINET PROFILES



City Scape Staggered



Crouse Crown with No Soffit



Crouse Crown with Soffit



# KITCHEN



Soft-Close Hinges



Under-mounted Cabinet Moulding



Cabinet Hardware  
Available in Matte Black & Satin Nickel



MF-442 Pantry Closet w/  
Pull-out Shelves



Double Pantry w/ Pull-out Shelves



Full Backsplash





30"Glass Range Hood



Wood Craftsman Range Hood



Beverage Cooler



Corner Lazy Susan



Appliance Garage



Open Shelves with Brackets



Tip-Out Tray at Kitchen Sink



Std. Self Edge Countertops & Laminate Backsplash



Crescent Edge Countertops Optional

# KITCHEN SINKS



Standard Stainless Steel Kitchen Sink



Stainless Steel Farmer's Sink



Vegetable Sink



Single Bowl Stainless Steel Sink



Galley Sink with Chef's Spring Faucet  
Includes: Cutting Board, Sink Covers, Drying Rack, Straining Rack,  
and Removable Second Sink Bowl



# BATHROOM



4x6 Walk-In Tile Showers

\*Note: Mosaic Ribbon N/A



48" Ceramic Tile Shower

- Available with ceramic 2 walls.
- Available with ceramic 3 walls.  
(see tile layouts above)



48" Ceramic Tile Shower  
with Seat



Seat for 4'x6' Walk-In Tile  
Shower

# BATHROOM



Garden Tub/Shower



66" Freestanding Tub



Adjustable Hand Held Shower Head



60" Fiberglass Shower with Door





Pedestal Sink



Cabinet Over Toilet



Square Sink



Recessed Medicine Cabinet



LED Mirror



Black Simulated Framed Mirror

# FAUCETS

AVAILABLE IN BRUSHED  
NICKEL AND BLACK



Coil Spring Kitchen Faucet



Wet Bar or Salad Sink  
Faucet



Wall Mount Rainfall  
Shower Head



Pull-Down Kitchen  
Faucet



Kitchen Faucet with  
Sprayer



Wall Hand-Held Shower  
Head



Roman Tub Faucet



Utility Sink Faucet



Shower Head and Diverter



Pot Filler Faucet



2-Handle Bath Lavatory  
Faucet



Tub/Shower Spout

# UNIVERSAL LIFESTYLE



Universal Lifestyle features are designed for people of all ages, meeting the diverse needs of homeowners in all stages of life. This wide range of Universal Lifestyle features enable all generations of homeowners to own a beautiful quality home that meets their individual needs, rather than having to adapt to existing home designs.



*\*Note: Swing Out  
Cabinet Doors  
Shown are Optional*



36" Interior Doors

Lowered Kit Base Cabinets

Lowered Kit Overhead Cabinets

Raised Dishwasher

Lowered Wall Oven

Roll-Under Surface Burner

Roll-Under Kitchen Sink

Lowered Built-in Microwave

Roll-Under Bath Vanities

Elevated Commode w/ Dual Flush

Grab Bar Adjacent to Commode

Roll-in Shower

Grab Bar in Shower

Hand Held Shower Head

Walk-In Tub

Lever Passage Sets & Locksets

Electrical Recept 18" off Floor

# LIGHTING



Dining Room Light  
*Available in Brushed Nickel Only*



Dining Room Light  
*Available in Matte Black Only*



Stem Light  
*Available in Brushed Nickel & Matte Black*



Corded Pendant Light  
with Large Glass Globe  
*Available in Matte Black*



4-Light Open Cage Fixture  
*Available in Black Only*



Hanging Foyer Light for  
2-Stories  
*Available in Brushed Nickel Only*



2-Light Bath Vanity Fixture  
*Available in Brushed Nickel and Black*



Ceiling Light  
*Available in Brushed Nickel Only*  
*Optional Bedroom Light*



Cage Exterior Fixture  
*Available in Black Only*



# ELECTRICAL



Computer, Phone, & TV Jack with Recept (1) Cat 5 Jack & (2) Phone Jacks) not available on 2nd floor of Two-Stories or above fireplace.



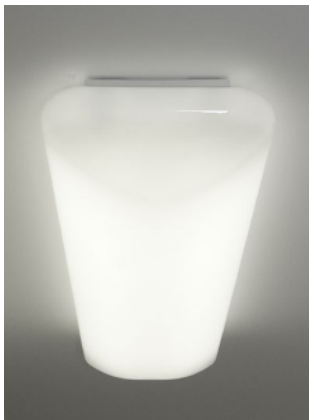
Recept with USB Outlets



Recept with Night Light



Recessed LED Light



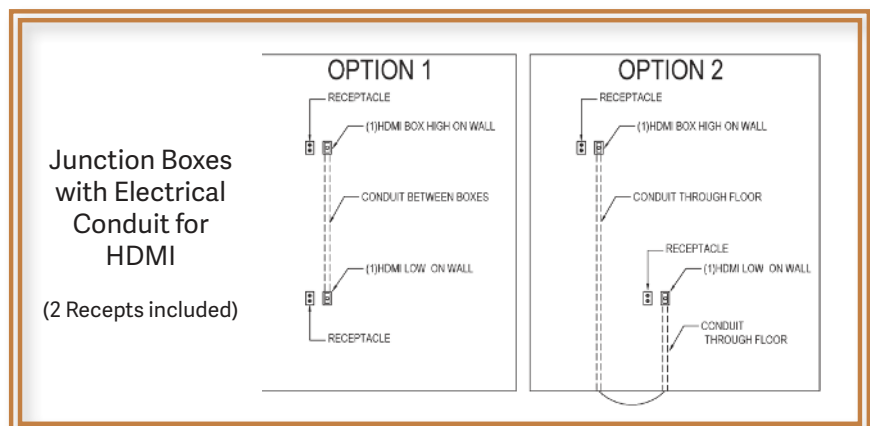
48" LED Fluorescent Cloud Light



White Paddle Fan



200 amp Electric Service on Main Floor  
(Standard Dropped to Basement)



Onyx Black | Shingles



Harbor Sunset | Stone Facade

## Customize Your Dream Home!



EXTERIOR



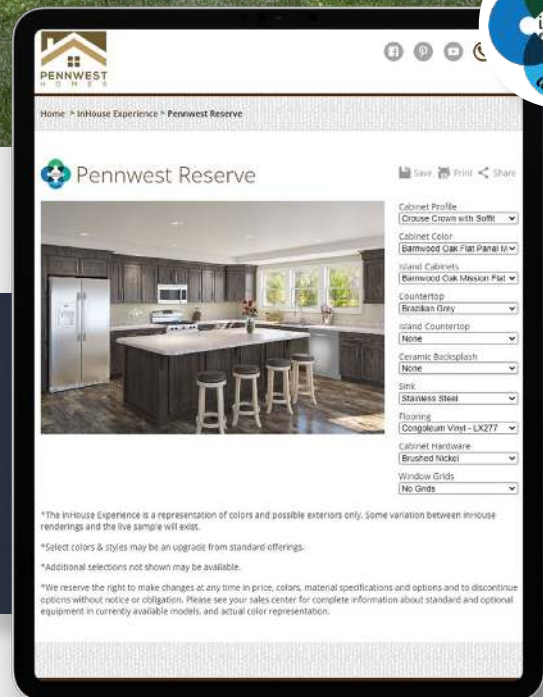
BATH



KITCHEN

Customize your dream home colors to see what your house could look like. The exterior InHouse experience allows you to select a Roof Pitch with a Dormer, Siding Color, Shingle Color, Trim Color, Shake Siding, Vertical Siding to get an idea for what your home could look like with the color scheme you have selected.

The InHouse experience gives you the opportunity to design your dream Bathroom or Kitchen. Selections range from your countertop colors, cabinet colors, vinyl floor color, appliances, even down to your kitchen sink!



[www.pennwesthomes/inhouse-experience](http://www.pennwesthomes/inhouse-experience)



# FIREPLACES



Pennsylvania Half Stack



Castle Rock Half Stack

\*Also Available in Full Stack and with Raised Hearth



LED Fireplace  
(Shown with Shiplap)



Entertainment Center with Shelves, Bench, & LED Fireplace

## OTHER GREAT FIREPLACE OPTIONS NOT PICTURED:

Hickory Fireplace

\*Fireplaces are for aesthetic purposes and should not be used as a supplemental heat source.

# INTERIOR DOORS & STAIRS



Pull Down Steps for Attic Storage



Attic Stairwell  
\*note: stairs may be OSB tread & risers



Stairwell with Light & Insulated Interior Door w/ Sweep

Scroll Optional



Nickel  
Interior  
Lever



6-Panel White Interior Door



Pantry Door with Glass



Interior Sliding Barn Doors with Soft Close Hardware  
Shown in White  
(Also available in Grey or Natural)



# CEILINGS



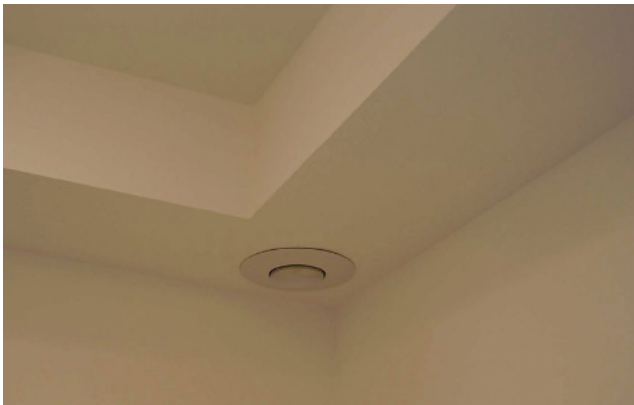
Inset Tray Ceiling



Coffered Ceiling



Drywall Cross Tray Ceiling



Tray Ceiling  
(Shown with Optional LED Lights)



Recessed Ceiling with Dropped Beams and ceiling fan  
Restrictions Apply - See Sales Representative for Details



Feature Ceiling  
includes cove moulding  
(painted on-site by others)

# UTILITY ROOM



**Bench and Organizer**  
(available in 36" or 42" - Dependant upon floor plan)



**36" Raised Pet Shower**



**Cabinets over Washer and Dryer**  
(shown in Oak Mission Flat Panel Cabinets - Standard)



**Utility Room Laundry Table**  
(raised panel no longer available)

## Laundry Centers



**Center A**



**Center B**



**Center C**

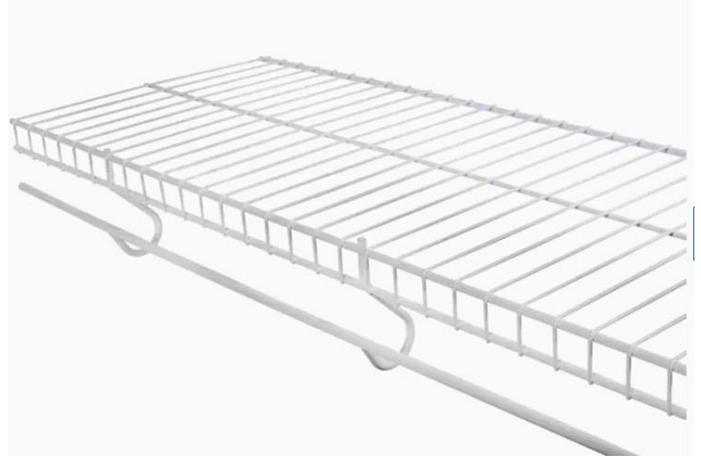


**Center D**

# EXTRAS



Clearview Entertainment Wall



Optional Slider Rods for Closet Shelving



Built-Ins (where available)  
(see your sales representative for more  
information on the modules available)



Shiplap Accent Wall



Hot Water Baseboard Register





inHouse  
experience



2023

PENNWEST  
reserve  
R

Pennwest Homes  
4 Pennwest Way Route 38  
Emlenton, PA 16373  
[www.pennwesthomes.com](http://www.pennwesthomes.com)

# OPTIONS BROCHURE *Guide*

Connect with Us!



YouTube

All descriptive representations of the products on this brochure are believed to be correct at the time of publication. However, due to continued product improvement and changes in suppliers design and production, accuracy cannot be guaranteed. Therefore, equipment colors, material specifications, prices and model availability are subject to change without notice. All information and images contained in this brochure are property of Commodore Homes and for the use by active dealers of the company only. © CH 12/22