



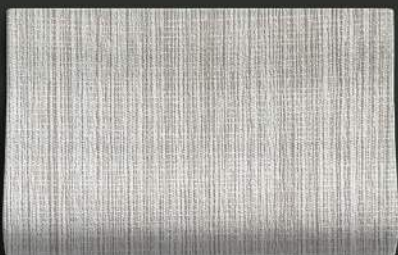
DECOR SELECTION

2023 – 2024

Guide



June Stone



Commodore Homes of Pennsylvania is well known through the industry for high quality, innovative designs , and beautiful homes - making Commodore the first choice of home buyers. Commodore's leadership is made possible by a highly trained and experienced workforce, the latest building technologies, and a passion for your satisfaction. Whether the buyer desires a single or multi-section home, the quality answer is always a Commodore Home.

Commodore's commitment to the homeowner, the retailer, and their own employees ensures a high end quality product that makes every buyer proud to "Come Home to Commodore." And with many of our manufactured homes now eligible to earn the ENERGY STAR® label, we bring an additional level of quality and comfort to our homes. For the sixth straight year, Commodore Homes of Pennsylvania is an ENERGY STAR® award winner.

TABLE OF CONTENTS

Decor Selections

INTERIOR

Cabinets
Hardware
Countertops
Tile - Kitchen and Bath
Shower Tile
Vinyl Flooring
Vinyl Tile
Carpet
Wall Vinyl
Shiplap
Doors
Trim
Fireplace Surround

EXTERIOR

Standard Siding
Market Square Siding Selections
Shutter Selections
Architectural Shingles - Standard
Architectural Shingles - Architectural
Accent Siding- Shake
Accent Siding - Vertical



CABINETS



French Country Oak

Mission Flat Panel

Available in:

- MDF
- Hardwood



Eastern White Oak

Mission Flat Panel

Available in:

- MDF
- Hardwood



Rustic Elm Oak

Mission Flat Panel

Available in:

- Hardwood



Cloud Grey

Mission Flat Panel

Available in:

- Painted Oak



Deep Blue

Mission Flat Panel

Available in:

- Painted Oak

Hardware



Hardware

Pull or Knob



Available in:

- Black
- Gold
- Nickel



Classic Craft Cabinetry

Commodore Homes understands the importance of a well-designed kitchen. Kitchens are often the gathering point of a home, where families share meals and friends share time. Key to any great kitchen are the cabinets.

Commodore Homes' Classic Craft Custom Cabinets are built to look great, built to meet your needs, and *built to last*. Most of our homes have cabinets that are constructed to the rigorous standards of the Kitchen Cabinet Manufacturers Association. This KCMA label is the same as you'll find in the best store-purchased or custom-built cabinets.

Simply put, our cabinets are heavier, stronger, and built better. Our cabinets are regularly (and randomly) tested by KCMA representatives. Our cabinets need to pass many tests to meet KCMA standards, including:

- Overhead cabinets rated to 500 pounds capacity
- Drawers opened 25,000 times - with weight
- Cabinet doors opened 25,000 times
- Harsh testing of cabinet finishes



1-800-854-6611

COUNTERTOPS

Laminate



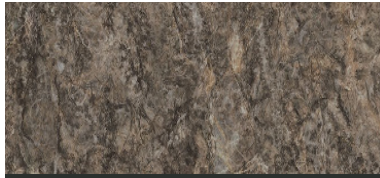
Autumn Carnival



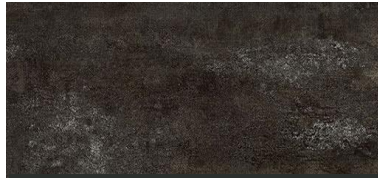
Drama Marble



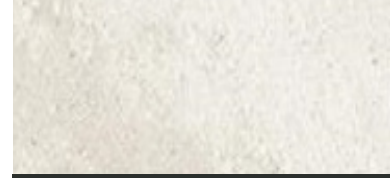
Spring Carnival



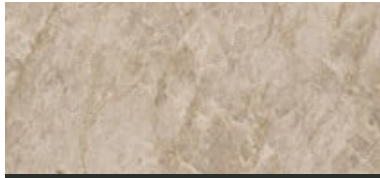
Toffee Di Pesco



Forged Steel



Beachwalk



Ouro Branco



Ice Mist



Granito Cascata



Glacier Quartzite



Drama Marble

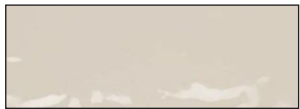
 **Wilsonart®**

CERAMIC TILE

Kitchen & Bath



Oxford White
4" x 12" Tile
Middleton Square



Latte
4" x 12" Tile
Middleton Square



Urban Mist
4" x 12" Tile
Middleton Square



Charcoal - Matte
4" x 10"
BRIQUE™



White - Matte
4" x 10" Tile
BRIQUE™



Cotto - Matte
4" x 10" Tile
BRIQUE™

Kitchen & Shower

THE STONE LOOK

MONARC
WALL PANEL SOLUTIONS

These finishes recreate the classic beauty and sophistication of natural stone slab, and come with the added durability.



Bianco Carrara
Monarc



Calcatta Gold
Monarc



CERAMIC TILE

Shower



Woven Slate
12" x 24" Tile
Marazzi



Linen
12" x 24" Tile
Marazzi

FLOORING

VINYL FLOORING



Belleville
Vinyl Flooring



Beachwood
Vinyl Flooring



Country Road
Vinyl Flooring



Crestwood
Vinyl Flooring



Fairbanks
Vinyl Flooring

Luxury VINYL PLANK



Fauna
Luxury Vinyl Plank



Kardigan
Luxury Vinyl Plank

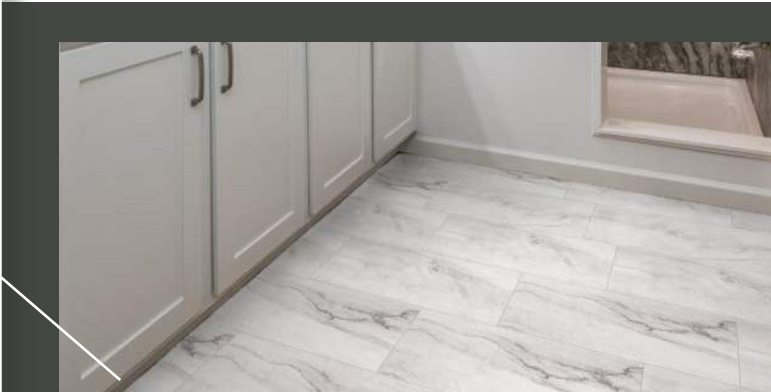


Hawthorne
Luxury Vinyl Plank

Luxury VINYL TILE



Quarzo Taj
Luxury Vinyl Tile
12" x 24" Tile



Quarzo Taj

FLOORING

Carpet

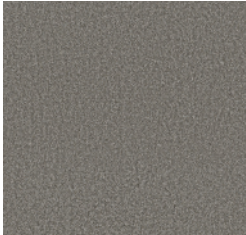
TAKE AWAY (15 OZ. NYLON)



Mesa



Spanish Gold



Truffle

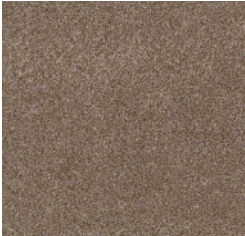


Summer Sand

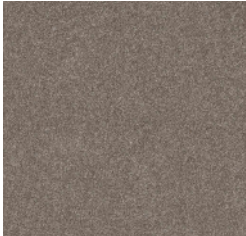
SHAKE IT UP (25 OZ. POLY)



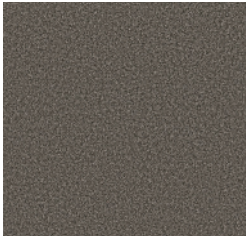
Fox Fur



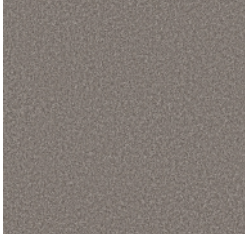
Bits of Brown



English Oak



Salt & Pepper

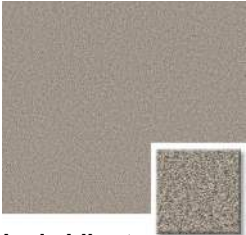


Silversmith

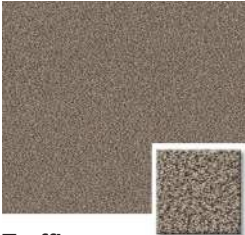


Magnolia Bloom

TRUSPIRIT (40 OZ. POLY)



Lady Liberty



Truffle



INTERIOR *Vinyl*

WALL VINYL



White Ruff Stuff
Wall Vinyl



June Stone
Wall Vinyl



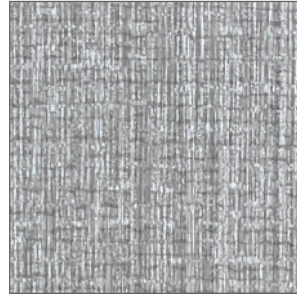
Cane
Wall Vinyl



Medley Light
Wall Vinyl



Medley Dark
Wall Vinyl



Xavier
Wall Vinyl

INTERIOR *Shiplap*

SHIPLAP



White
Painted



Grey
Stained



Country
Stained

INTERIOR *Fireplace*



Aged Iron
Monarc



INTERIOR *Doors*



2-PANEL INTERIOR



OPTIONS:

- ☐ **White**
Painted
- ☐ **Khaki**
Painted

5-PANEL INTERIOR



OPTIONS:

- ☐ **White**
Painted
- ☐ **Khaki**
Painted

BARNDOOR



OPTIONS:

- ☐ **White**
Painted
- ☐ **Country**
Painted
- ☐ **Grey**
Stained

** Where available*

INTERIOR *Trim*



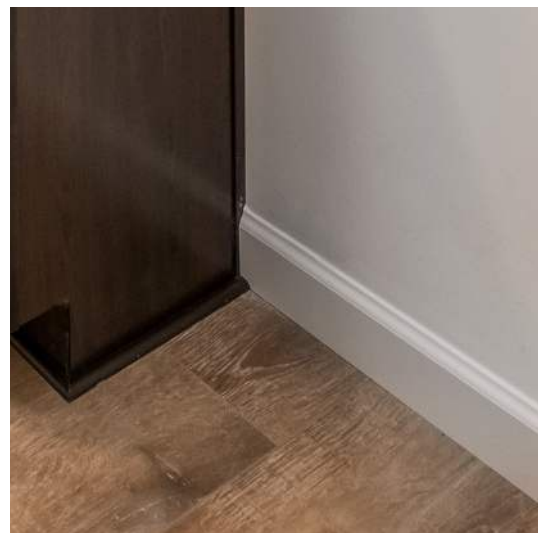
French Country



White Standard

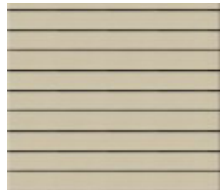


Contemporary White



EXTERIOR

STANDARD SIDING SELECTIONS



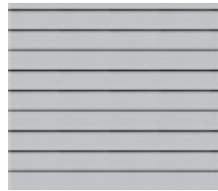
Country Beige



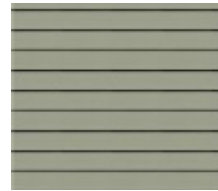
Aspen White



Clay



Driftwood



Cypress

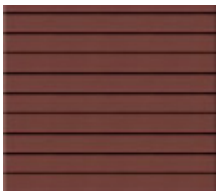


Greystone

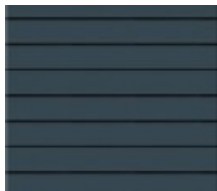
MARKET SQUARE SIDING SELECTIONS



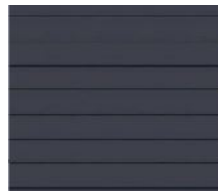
Graphite



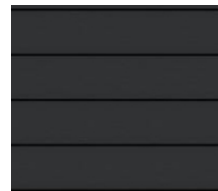
Lighthouse Red



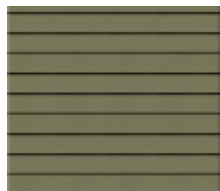
Regatta Blue



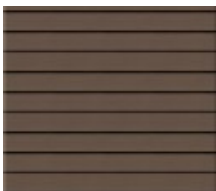
Indigo



Carbon



Spruce



Espresso

ATLAS STONE SELECTIONS



Aspen



Madison

Accent



White Shake

SHAKE SIDING



Black Walnut



Clay



White

EXTERIOR

SHUTTER SELECTIONS



Black



White



Sandstone



Cranberry



Brown



Indigo



Pewter Grey

ARCHITECTURAL SHINGLES - STANDARD



Driftwood



Apen Grey



Onyx Black

ARCHITECTURAL SHINGLES - ARCHITECTURAL



Estate Grey



Driftwood



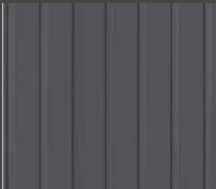
Onyx Black

Accent



White Vertical

VERTICAL SIDING



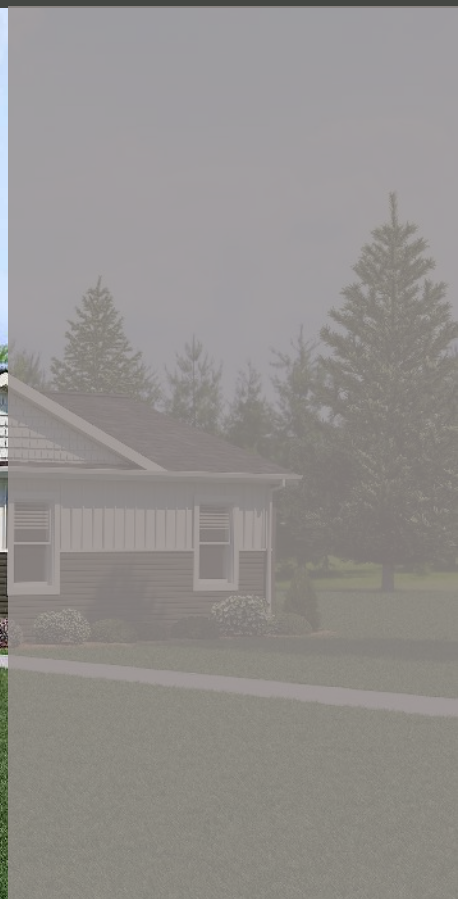
Graphite



Clay



White



YOUR INDEPENDENT RETAILER IS:



20898 Paint Blvd.
Shippensburg, PA 16254
(814) 226-9210
www.commodore-pa.com

Visualize your dream home!



www.commodore-pa.com/inhouse-experience

CONNECT WITH US:



Your purchase contract, including options, is with your retailer who is an independent contractor, not our agent, and who is responsible totally for any alterations, exchanges, additions or attachments made in or to your home.

All descriptive representations of the products on this brochure are believed to be correct at the time of publication. However, due to continued product improvement and changes in suppliers, design and production, accuracy cannot be guaranteed. Therefore, equipment, colors, material specifications, prices and model availability are subject to change without notice. All information and images contained in this brochure are property of Commodore Homes and for the use by active dealers of the company only. © 8/23