



Elite

Pinecrest



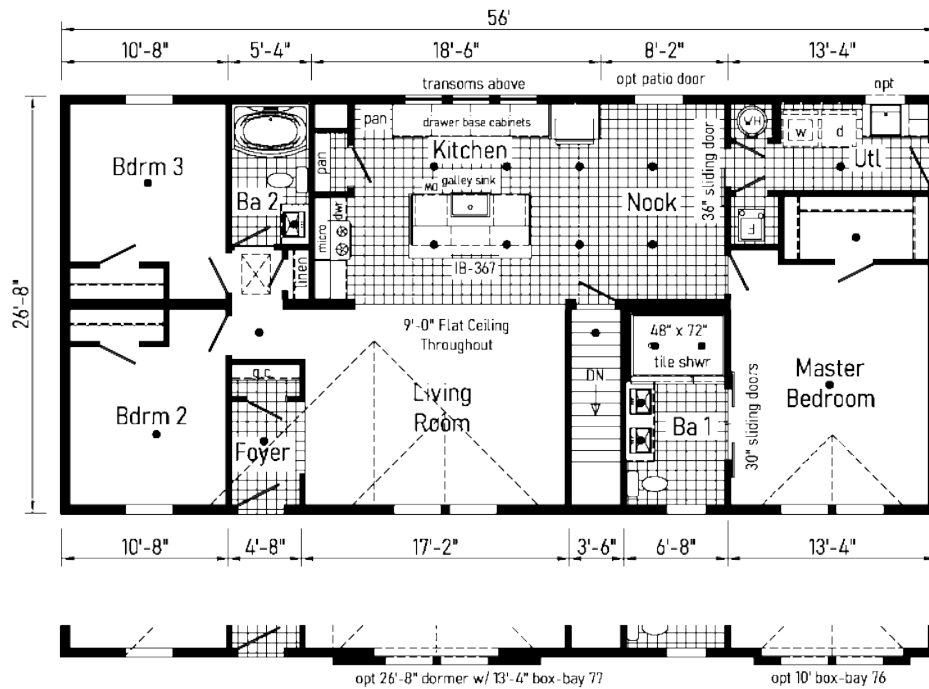
Commodore Homes
PENNSYLVANIA

TABLE OF CONTENTS

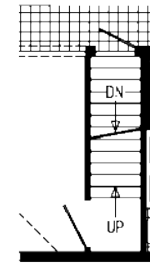
| <u>PG</u> | <u>Model</u> | <u>Size</u> | <u>Sq Ft.</u> |
|-----------|----------------|-------------|---------------|
| 3 | RENDERINGS | | |
| 4 | PGM5001P | 2856 | 1493 |
| 4 | PGM5002P | 2860 | 1600 |
| 5 | PGM5002 PHOTOS | | |
| 6 | PGM5003P | 2864 | 1707 |
| 6 | PGM5004P | 2868 | 1813 |
| 7 | PGM5009P | 2856 | 1493 |





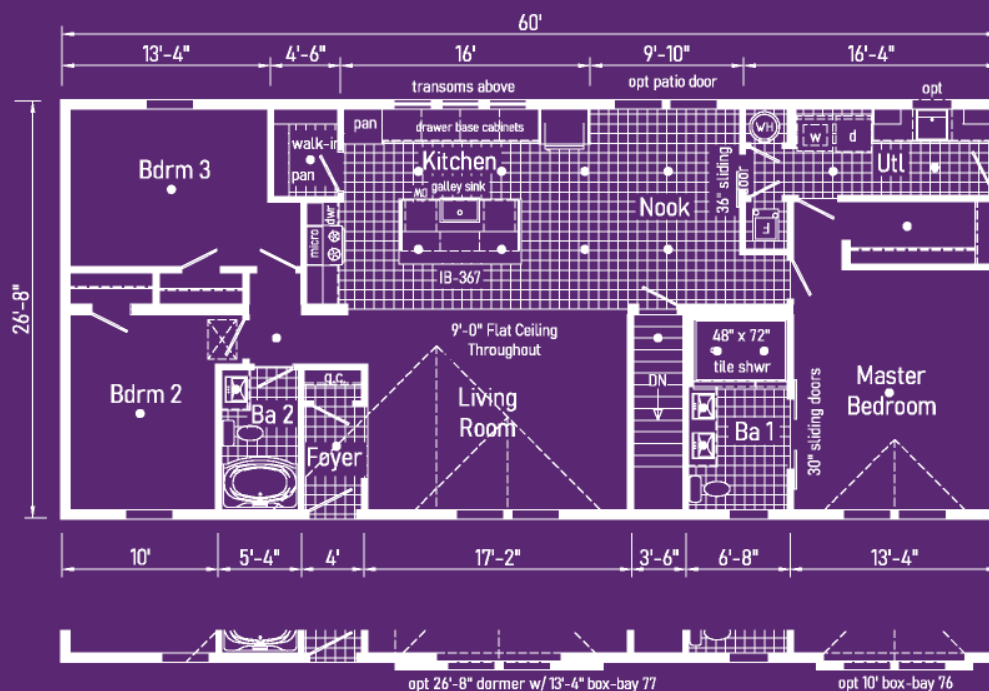


Curb Side Exterior Options

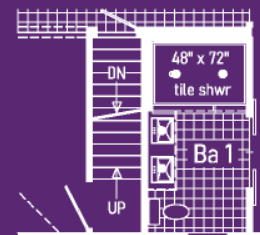


Optional Attic Stairs

Only Available with 8' Ceiling
(Omits transoms at kitchen & changes
48" ht. kitchen overhangs to 42" ht.)
Note: Dropped ridge beam
with opt. attic stairs.



Curb Side Exterior Options



Optional Attic Stairs

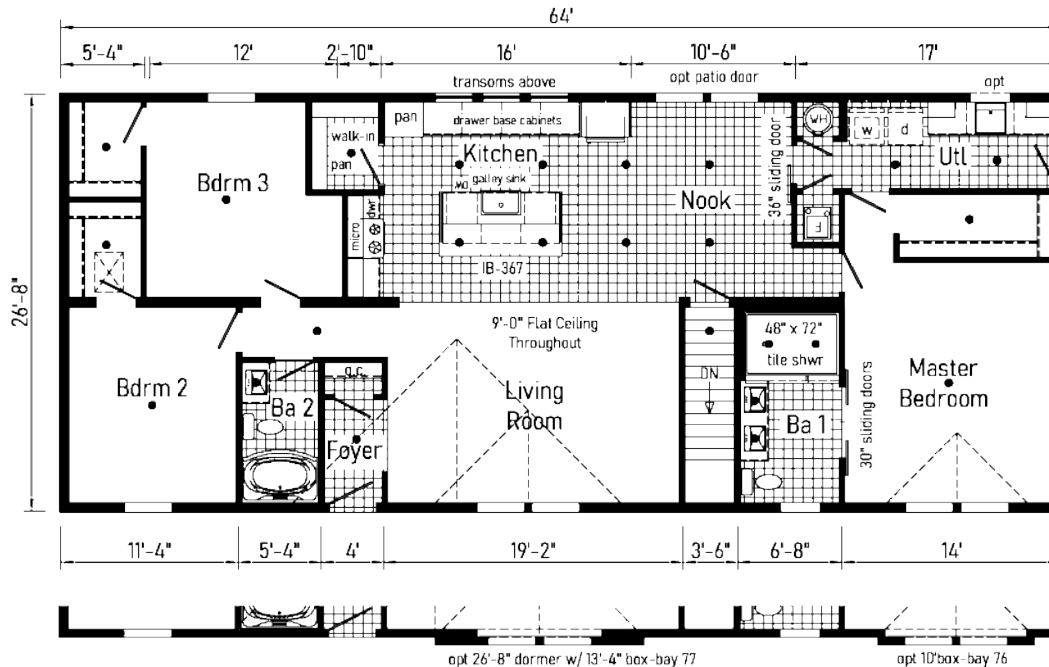
Only Available with 8' Ceiling
(Omits transoms at kitchen & changes
48" ht. kitchen overhangs to 42" ht.)
Note: Dropped ridge beam
with opt. attic stairs.



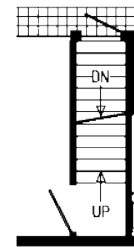
Scan to
Watch
Video!



*Please use pictures for floorplan vision only. Decors and materials used are constantly changed and improved.

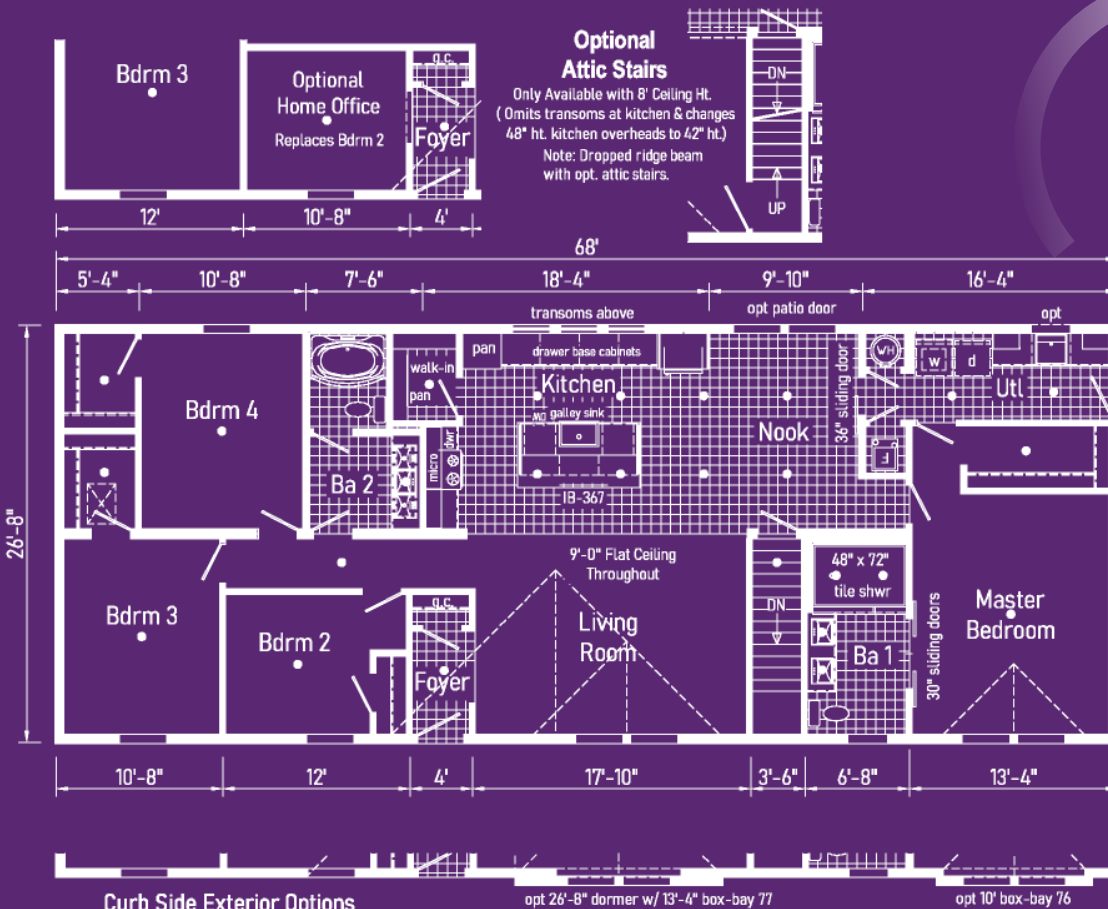


Curb Side Exterior Options



Optional Attic Stairs

Only Available with 8' Ceiling
(Omits transoms at kitchen & changes
48" ht. kitchen overheads to 42" ht.
Note: Dropped ridge beam
with opt. attic stairs.



Curb Side Exterior Options



Optional Attic Stairs

Only Available with 8" Ceiling
(Omits transoms at kitchen & changes
48" ht. kitchen overhangs to 42" ht.)
Note: Dropped ridge beam
with opt. attic stairs.



Elite
Pinecrest

